



TABLE OF CONTENTS

General Information	2
Sales Policy	3
Product Engineering Specifications - Drilled Barstock	
Overall Lengths: <31.25"	4
Overall Lengths: >31.25" through 61.25"	5
Overall Lengths: >61.25"	6
Post-Fabricated Flange Dimensional Tolerances	7
Protection Tube Engineering Specifications	8
Manufacturer's Standard Packaging Procedures	9
Threaded Thermowells	
Reduced	10 - 11
Straight	12 - 15
Tapered	16 - 19
Limited Space	20
Flanged Thermowells	
Reduced	21
Straight	22 - 23
Tapered	24 - 25
Socket-Weld Thermowells	
Reduced	26 - 27
Straight	28 - 31
Tapered	32 - 35
Vanstone Thermowells	
Assembly	36
Reduced	37
Straight	38 - 39
Tapered	40 - 41
Weld-in Thermowells	
Tapered	42 - 45
Sanitary Thermowells	46
Ground Joint Thermowells	47
Plug & Chain Attachments	48



The thermowells shown in this catalog are standard lengths for bimetallic thermometers. We also manufacture wells for thermocouples and RTDs. Texas Thermowell, Inc. will be glad to quote your custom requirements and additionally provide our high standard of quality to the following specifications.

Bore Diameters

Calculations

Coatings

Exotic Materials

Heat Treating

Oxygen Cleaning

Pipe Protection Tubes

Sanitary Wells

Sheaths

Testing Procedures:

- Internal Hydrostatic Test
- Liquid Dye Penetrant Test
- PMI, X-ray, Radiograph, etc.

Welding (Standard & Full penetration)

Extensive range of sizes

ASME PTC 19.3

Alumina Oxide, Colmonoy ⁽¹⁾, Kynar ⁽²⁾,
Stellite ⁽³⁾, Halar ⁽⁴⁾, Tantalum, PTFE,
PFA (Fluoropolymers) and others

The largest inventory of Nickel Alloys,
flanges and bar, in the industry

NACE MR-01-75 certification, Stress
Relief, annealing and custom

In compliance with ASTM G93-88

Extensive inventory of pipe sizes & materials

Texas Thermowell is certified under the 3A

Dairy Standard, Authorization #690

Tantalum, Titanium, Hastelloy Alloys, etc.

In compliance with ASTM E1003-84(1990)

In compliance with ASTM E1220-92

Additional information available

Welding performed by welders certified
under ASME Sec. IX, Boiler & Pressure
Vessel Code

Our standard delivery policy is 2 weeks shipping after receipt of order. However, if you require a "rush" delivery, we will provide whatever service you may need. Because of our large and advanced equipment package and the largest inventory of bar and flanges in the industry, we are able to respond in a manner which cannot be matched by anyone in our industry.

Texas Thermowell, Inc. has a formal Total Quality Management system which is in compliance with the standards set forth in ANSI/ASQC 92 (which is the technical equivalent of International Standards ISO 9002). The Company is a sustaining member of the American Society for Quality Control as well.

(1) Trademark Wall Colmonoy

(2) Trademark Pennwalt Corp.

(3) Trademark Deloro Stellite

(4) Trademark Ausimont USA, Inc.



SALES POLICY

MANUFACTURER'S STANDARDS

TTI Standard Product Specifications and tolerances are offered when Customer specific requirements are not provided. TTI will be pleased to review Customer provided product specifications and tolerances for manufacturability.

PRE-CONTRACT REVIEW

Purchaser is responsible for confirming the TTI defined interpretation of contract requirements. Approval drawings, notations and TTI requests for clarification shall be mutually agreed upon prior to accepting an order.

PAYMENT TERMS

Net 30 Days with established account.

MINIMUM BILLING CHARGE

\$25.00 Net Per Order (high volume accounts are exempted)

PRICES

All Prices are Quoted "Net Each" in U.S. Currency. Standard 30 day validity may be subject to material availability or prior sale when applicable.

SCHEDULING

As a standard, orders are scheduled to ship 10 working days after receipt. The TTI Sales Department will be pleased to provide pricing and verify availability for rush scheduling.

SHIPPING CHARGES

Freight on Board Beaumont, TX. Freight charges are prepay and add (upon credit approval).

SHIPMENT DAMAGES

Damage to shipments beyond the F.O.B. point is the responsibility of the carrier. Shipments should be opened and inspected promptly upon receipt. Replacement shipments are made on a chargeable basis.

SHIPMENT SHORTAGES

All claims for shortages must be reported within 7 days of receipt of shipment. The purchaser's receiving department is responsible for furnishing the TTI bundle identification markings and for storing damaged containers that may require inspection by the freight carrier, if applicable.

MATERIAL RETURNS

Contact the TTI Sales Department for information. A Return Authorization number is required to assure shipment acceptance at the TTI Receiving Department.

RESTOCKING CHARGES

Contact the TTI Sales Department for information. If material is approved for restock, the incoming freight must be accompanied with an authorization number.

SAMPLE MATERIALS

Sample materials for evaluation and quotation will require an authorization number for internal routing and processing. Contact the TTI Sales Department.



TEXAS THERMOWELL, INC.
"The Thermowell People"

PRODUCT ENGINEERING SPECIFICATIONS

DRILLED BARSTOCK
OVERALL LENGTHS: THROUGH 31.25" ONLY

Barstock Outside Diameter	Mill Standard $+.000"/-1/32"$ (Hex: Flat to flat measurement; Round: Outside diameter)
Bore "Bottom" Shape	"W" (Nominal)
Bore Concentricity	.0015" drift per inch, .035" Max. T.I.R.
Bore Depth	$+.030"/-0.000"$
Bore Diameter	$+.005"/-0.003"$ Stem Only (Not Welded) $+.007"/-0.003"$ Welded Products
Chamfer	Nominal
Insertion Length	$\pm .063"$
Instrument Connection	1/2"-14 NPT. Entrance bevel: 60° ($\pm 1/2^\circ$); Drill .718" ($\pm .005"$) I.D. x 1.00" ($\pm .015"$) depth; 59° (Nom.) drill bottom. Tap (thread) .500" x .875" depth. Yield: 3 full turns (Min.) x 4 full turns (Max.) on plug gauge. In compliance with ANSI B1.20.1-92. *NOTE: Variances in standard dimensions occur in the TTI Series: 1/2"LS (Limited Space) threaded thermowell, request dimensions.
Material	In compliance with ASTM specifications (or other applicable National Standard such as ASME, AWS, etc.)
Overall Length	Nominal
Process Connection Flange	Reference Doc. No. TX-PFT
Process Connection Thread	In compliance with ANSI B1.20.1-92. Specifications vary depending upon the required process connection size, request dimensions.
Radius	Nominal
Stamping	3/32" minimum height characters indicating material grade & Manufacturer's internal traceability code(s).
Stem Finish	16-32 RMS over 85% of "U" dimension (Exception: *high carbon/low alloy content materials).
Stem Outside Diameter(s)	$\pm .010"$
Tapered Allowance	Maximum "U" length for a full length taper is 16.00". "U" dimensions greater than 16.00" in length are manufactured with a straight o.d. (Utilizing the Major "taper" diameter) beginning below the process connection radius & following through with only the last 16.00" ($+.000"/-0.500"$) of the "U" dimension tapered to the Minor o.d.
Tip Thickness	$.250" \pm .063"$
Weld	Reference TTI Doc. No TX-PFT for flanged wells. (Multiple-piece construction weld joints: Reference TTI Dwg. No. TX-B)
Wrench Allowance	Nominal. Wrench allowance specifications vary with the process connection size ordered. Request dimensions.

*A listing of applicable material grades is provided on the TTI Doc. No. TX-CSL which is available upon request.

Notice: Customer supplied specifications will be accepted as an alternative. Manufacturability of such specifications will be determined by Texas Thermowell, Inc.

Doc. No. PES 31
Rev. 1; Date: 09-17-96
File Loc. #g:\dept\product\pr0150.wpd

DOC # MA-002.0
REV 3, 12-99



PRODUCT ENGINEERING SPECIFICATIONS

DRILLED BARSTOCK

OVERALL LENGTHS: >31.25" THROUGH 61.25" ONLY

Barstock Outside Diameter	Mill Standard $+.000"/-1/32"$ (Hex: Flat to flat measurement; Round: Outside diameter)
Bore "Bottom" Shape	"W" (Nominal)
Bore Concentricity	.002" drift per inch, .035" Max. T.I.R.
Bore Depth	$+.063"/-.000"$
Bore Diameter	$+.007"/-.003"$
Chamfer	Nominal
Insertion Length	$\pm .125"$
Instrument Connection	1/2"-14 NPT. Entrance bevel: 60° ($\pm 1/2^\circ$); Drill 718" ($\pm .005"$) I.D. x 1.00" ($\pm .015"$) depth; 59° (Nom.) drill bottom. Tap (thread) .500" x .875" depth. Yield: 3 full turns (Min.) x 4 full turns (Max.) on plug gauge. In compliance with ANSI B1.20.1-92.
Material	In compliance with ASTM specifications (or other applicable National Standard such as ASME, AWS, etc.)
Overall Length	Nominal
Process Connection Flange	Reference Doc. No. TX-PFT
Process Connection Thread	In compliance with ANSI B1.20.1-92. Specifications vary depending upon the required process connection size, request dimensions.
Radius	Nominal
Stamping	3/32" minimum height characters indicating material grade & Manufacturer's internal traceability code(s).
Stem Finish	16-32 RMS over 85% of "U" dimension (Exception: *high carbon/low alloy content materials).
Stem Outside Diameter(s)	$\pm .015"$
Tapered Allowance	Maximum "U" length for a full length taper is 16.00". "U" dimensions greater than 16.00" in length are manufactured with a straight o.d. (Utilizing the Major "taper" diameter) beginning below the process connection radius & following through with only the last 16.00" ($+.000"/-.500"$) of the "U" dimension tapered to the Minor o.d.
Tip Thickness	$.250" \pm .063"$
Weld	Reference TTI Doc. No. TX-PFT for flanged wells. Multiple-piece construction weld joints: Reference TTI Dwg. No. TX-B. Drilled-through tip with full pen. weld to close: Reference TTI Dwg. No. TX-FP TIP
Wrench Allowance	Nominal. Wrench allowance specifications vary with the process connection size ordered. Request dimensions.

*A listing of applicable material grades is provided on the TTI Doc. No. TX-CSL which is available upon request.

Notice: Customer supplied specifications will be accepted as an alternative. Manufacturability of such specifications will be determined by Texas Thermowell, Inc.



PRODUCT ENGINEERING SPECIFICATIONS

DRILLED BARSTOCK

OVERALL LENGTHS: GREATER THAN 61.25"

Barstock Outside Diameter	Mill Standard $+.000"/-1/32"$ (Hex: Flat to flat measurement; Round: Outside diameter)
Bore "Bottom" Shape	"W" (Nominal)
Bore Concentricity	.002" drift per inch, .035" Max. T.I.R.
Bore Depth	$+.500"/-.000"$
Bore Diameter	$+.007"/-.003"$
Chamfer	Nominal
Insertion Length	$\pm .500"$
Instrument Connection	1/2"-14 NPT. Entrance bevel: 60° ($\pm 1/2^\circ$); Drill .718" ($\pm .005"$) I.D. x 1.00" ($\pm .015"$) depth; 59° (Nom.) drill bottom. Tap (thread) .500" x .875" depth. Yield: 3 full turns (Min.) x 4 full turns (Max.) on plug gauge. In compliance with ANSI B1.20.1-92.
Material	In compliance with ASTM specifications (or other applicable National Standard such as ASME, AWS, etc.)
Overall Length	Nominal
Process Connection Flange	Reference Doc. No. TX-PFT
Process Connection Thread	In compliance with ANSI B1.20.1-92. Specifications vary depending upon the required process connection size, request dimensions.
Radius	Nominal
Stamping	3/32" minimum height characters indicating material grade & Manufacturer's internal traceability code(s).
Stem Finish	16-32 RMS over 85% of "U" dimension (Exception: *high carbon/low alloy content materials).
Stem Outside Diameter(s)	$\pm .015"$
Tapered Allowance	Maximum "U" length for a full length taper is 16.00". "U" dimensions greater than 16.00" in length are manufactured with a straight o.d. (Utilizing the Major "taper" diameter) beginning below the process connection radius & following through with only the last 16.00" ($+.000"/-.500"$) of the "U" dimension tapered to the Minor o.d.
Tip Thickness	.250" $\pm .063"$
Weld	Reference TTI Doc. No TX-PFT for flanged wells. Multiple-piece construction weld joints: Reference TTI Dwg. No. TX-B. Drilled-through tip with full pen. weld to close: Reference TTI Dwg. No. TX-FP TIP
Wrench Allowance	Nominal. Wrench allowance specifications vary with the process connection size ordered. Request dimensions.

*A listing of applicable material grades is provided on the TTI Doc. No. TX-CSL which is available upon request.

Notice: Customer supplied specifications will be accepted as an alternative. Manufacturability of such specifications will be determined by Texas Thermowell, Inc.



POST-FABRICATED FLANGE DIMENSIONAL TOLERANCES

Texas Thermowell, Inc. post-fabricated flange dimensional tolerances are provided below. These dimensional tolerances include those of the ANSI B16.5 National Standard, where applicable. Customer requested specifications will be reviewed for manufacturability upon request.

Flange Overall Thickness	
RF, FF, RTJ	+ .12"/- .000" (18" NPS and smaller). See "Exceptions Notice" following.
All others	± .062" (10" NPS and smaller). See "Exceptions Notice" following.
Exceptions Notice:	All post -fabricated "High Carbon/Low Alloy" content material grade flanges are provided per ANSI B16.5 maximum thickness. However, the ANSI B16.5 minimum thickness may be provided undersized ¹ by as much as .063".
Gasket Surface	
Standard Flanges	125-200 Microinch. Serrated-spiral (phonographic) grooves.
RTJ (Ring Type)	125-200 AARH. Smooth machined surface.
Vanstone Series	125-200 AARH. Smooth machined surface.
Flanged w/ Sheath	32-64 RMS (thermowell flange gasket surface)
Inside Diameter	
Drilled by TTI	Non-welded: +.005"/-.000" Welded: Request TTI standard welding drawing "TX-A1" (or optional full penetration welding drawing "TX-A2")
Radius	Nominal
Stamping	In compliance with ANSI B16.5 with additional 3/32" minimum height characters indicating TTI internal traceability code(s).
Thermowell Stem	Reference applicable TTI Doc. No. PES 31, PES 61, or PES G61.
Threaded	To standard gauge limits (when threads are applicable). Reference TTI Series "Threaded-On & Seal-Welded" detail drawings. Note: Standard ANSI B16.5 thread specifications are not fabricated to mate with a threaded thermowell stem.
TTI Welding Qualifications	
Welders	Welding is performed by welders certified under the ASME Sec. IX, Boiler & Pressure Vessel Code-1992.
WPS/PQR	Request welding documents prior to fabrication.
TTI Welding Specifications	
Standard Weld	Reference TTI Dwg. No. TX-A1
Full Penetration	Reference TTI Dwg. No. TX-A2
Non-Standard	Specifications provided upon request

FLANGED THERMOWELL DISCLOSURE:

Flanged thermowells are considered proprietary products which are not governed by ANSI B16.5. Post-fabricated thermowell flange components do not carry an automatic ANSI B16.5 rating² and are not considered in compliance with the standard³.

ANSI B16.5 PATTERNED FLANGES:

Certain material grades are not included in the ANSI B16.5 National Standard and are offered as "ANSI B16.5 Patterned" flanges. Patterned flanges are **dimensionally** compliant to ANSI B16.5. Prevalent material grades for patterned flanges include: Alloy C22 (Trade name: Hastelloy C22), Alloy 601 (Trade name: Inconel 601), HR 160, Tantalum, Titanium (all grades), and Zirconium (all grades), etc. Reference ANSI B16.5, TABLE 1A - LIST OF MATERIAL SPECIFICATIONS.

¹Price and availability for "high carbon/low alloy" content material grade flanges to meet ANSI B16.5 minimum flange thickness after fabrication is available upon request. TTI Doc. No. TX-CSL provides a listing of applicable materials.

²Reference ANSI B16.5-1988 (1992); Interpretation: 1-1, Subject: Modification to Flanges; Reply number (1) and number (2).

³Reference ANSI B16.5-1988 (1992); Interpretation: 1-4, Subject: Proprietary Products; Reply number (1) and number (3).



PROTECTION TUBE ENGINEERING SPECIFICATIONS

Pipe Outside Diameter	Mill Standard $\pm .032"$
Pipe Inside Diameter	Mill Standard: Pre-Fabrication *Post-Fabrication: Pipe I.D. is subject to distortion at each welded area. Pipe I.D. is not drilled or reamed after fabrication.
Closed-End Bottom Shape	Nominal. Ref. "TX FP TIP" for TTI standard closed-end tip specifications. (Pipe caps are available as an option to close the tip. Pipe cap specifications are available upon request.)
"Bore" Depth	$\pm .500"$ for Depths $\leq 60"$ $\pm .750"$ for Depths $> 60" - 96"$ $\pm 1.00"$ for Depths $> 96"$
Chamfer	Nominal
Insertion Length	$\pm .500"$ for Insertion Lengths $\leq 60"$ $\pm .750"$ for Insertion Lengths $> 60" - 96"$ $\pm 1.00"$ for Insertion Lengths $> 96"$
Material	In compliance with ASTM specifications (or other applicable National Standard such as ASME, AWS, etc.)
Overall Length	Nominal
Process Connection Bushing	Standard bushing dimensions are per "TX-PTB".
Process Connection Flange	Flange dimensions are compliant to ANSI B16.5 prior to fabrication. Flange facing finish: 125-200 Microinch
Male Pipe Thread	In compliance with ANSI B1.20.1-92. The thread specifications vary with the pipe size ordered, request dimensions.
Radius	Nominal
Stamping	3/32" Minimum height characters indicating material grade & Manufacturer's internal traceability code(s).
Stem Surface Finish	RA 50 over 55% of "U" length
Tip Thickness	1/4" ($\pm 1/16"$). Valid for closed-end tip thickness per "TX-FP TIP"
Welding	a) Flange to Base Metal Weld: TTI Dwg. No. TX-A1 (Standard weld) b) Bushing to Base Metal: Fillet weld c) Barstock for Closed-end: TTI Dwg. No. "TX-FP TIP". Full penetration weld locations are subject to distortion and internal filler metal slag. d) Pipe Cap for Closed-end: TTI Dwg. No. "TX-B". Full penetration weld locations are subject to distortion and internal filler metal slag.

* Post-fabricated internal pipe diameters are affected by interdependent factors such as welding requirements, overall length and material grade. Internal pipe diameter tolerances are available on an "as needed" basis.

Notice: Customer supplied specifications will be accepted as an alternative. Manufacturability of such specifications will be determined by Texas Thermowell, Inc.



MANUFACTURER'S STANDARD PACKAGING PROCEDURES

Texas Thermowell, Inc. standard packaging procedures were devised to insure delivery of our product undamaged as well as minimize the cost of transit charges. *Price & availability for non-standard packaging procedures are available upon request.

INDIVIDUAL PRODUCT PACKAGING

All wells are enclosed in protective packaging prior to accumulation into the transit container(s).

Standard Wells

Enclosed in plastic protective webbing then wrapped in brown paper and taped closed.

Coated Wells & Special Surface Finishes

Enclosed in bubble wrap and cardboard sleeves

High Carbon/Low Alloy Content Materials (Carbon Steel, Chrome/Moly & similar materials)

Coated with Rust inhibitor (WD-40 or similar), enclosed in Vapor Wrap then wrapped in brown paper and taped closed.

TRANSIT CONTAINERS

All transit containers have packing material to absorb shock & separate product.

Standard Transit Container

Corrugated cardboard box rated at 200 lb. Test

WEIGHT LIMITATIONS:

Threaded wells: 30 lbs. Maximum per cardboard box

Flanged wells: 25 lbs. Maximum per cardboard box (See quantity limitations below)

QUANTITY PER BOX LIMITATIONS:

Flanged wells :(All other wells are subject to weight limitations rather than quantity limitations)

150# - 600# Rating flanges

Maximum of two (2) flanged wells per cardboard box (or less to avoid exceeding the standard weight limit)

900# or greater Rating flanges

Maximum of one (1) flanged well per cardboard box

Pallet

Cardboard boxes are stacked onto a pallet & wrapped with plastic wrap for transit. \$30.00 per pallet (Not included in net each prices) The estimated number of pallets required for large jobs are available through the TTI Sales Department. Palletization limits freight carrier choices. Generally palletizing does not require a forklift for unloading at the destination.

Crate

Request crate charges through the TTI Sales Department.

Crating limits freight carrier options. Generally, crating will require a forklift for unloading at the destination.

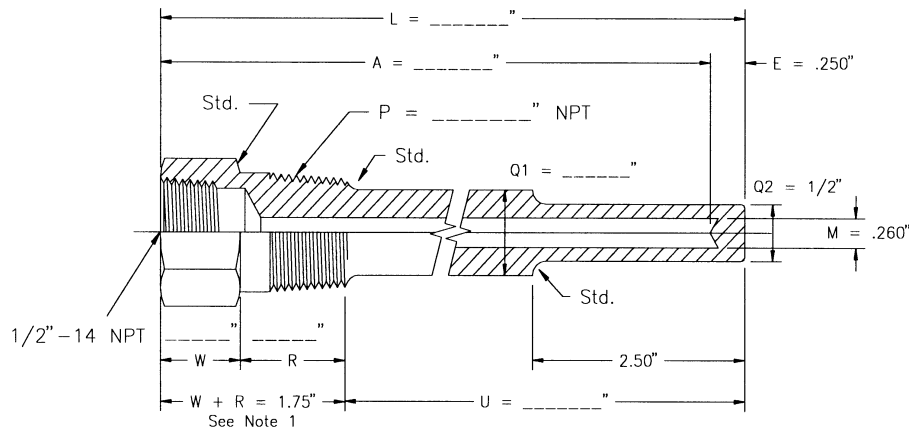
*TTI will not absorb any charges for product, freight charges or otherwise should requested non-standard packaging exceed the Manufacturer's standard limitations for weight or quantity per container herein.



TEXAS THERMOWELL, INC.
"The Thermowell People"

THREADED THERMOWELLS

SERIES R .260



EXTERNAL THREAD P	CODE NUMBER	INSERT LENGTH U	STEM LGTH A	SHANK DIA Q1
1/2" NPT	Ref. Note 2 - U R .260 - U	2-1/2	4	1/2
		4-1/2	6	5/8
		7-1/2	9	5/8
		10-1/2	12	5/8
		13-1/2	15	5/8
		16-1/2	18	5/8
		22-1/2	24	5/8
3/4" NPT	Ref. Note 2 - U R .260 - U	2-1/2	4	1/2
		4-1/2	6	3/4
		7-1/2	9	3/4
		10-1/2	12	3/4
		13-1/2	15	3/4
		16-1/2	18	3/4
		22-1/2	24	3/4
1" NPT	Ref. Note 2 - U R .260 - U	2-1/2	4	1/2
		4-1/2	6	7/8
		7-1/2	9	7/8
		10-1/2	12	7/8
		13-1/2	15	7/8
		16-1/2	18	7/8
		22-1/2	24	7/8

Note 1: When "P" = 1/2" npt, W = 1.00" and R = .750"

When "P" = 3/4" or 1" npt, W = .750" and R = 1.00"

Note 2: When U = 2-1/2" or less, the "U" length is manufactured straight construction and the outside diameter is determined by Series specified, for example:

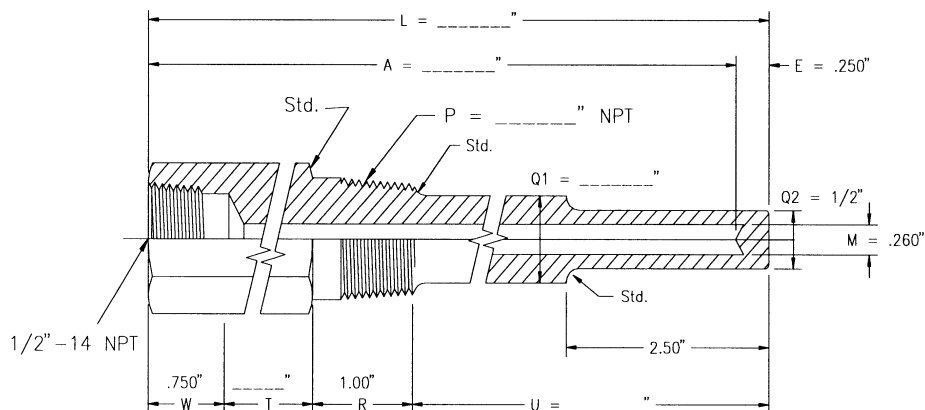
- Series R: Q1 and Q2 = 1/2" o.d. for all Process Connection sizes.
- Series S: Consult the "Series S .260" catalog page to determine the correct diameter.



TEXAS THERMOWELL, INC.
"The Thermowell People"

THREADED THERMOWELLS

SERIES RL .260



EXTERNAL THREAD P	CODE NUMBER	INSERT LENGTH U	LAG EXT T	STEM LGTH A	SHANK DIA Q1
1/2" NPT	Ref. Note 1 - U RL .260 - U	2-1/2	T2	6	1/2
		4-1/2	T3	9	5/8
		7-1/2	T3	12	5/8
		10-1/2	T3	15	5/8
		13-1/2	T3	18	5/8
		19-1/2	T3	24	5/8
3/4" NPT	Ref. Note 1 - U RL .260 - U	2-1/2	T2	6	1/2
		4-1/2	T3	9	3/4
		7-1/2	T3	12	3/4
		10-1/2	T3	15	3/4
		13-1/2	T3	18	3/4
		19-1/2	T3	24	3/4
1" NPT	Ref. Note 1 - U RL .260 - U	2-1/2	T2	6	1/2
		4-1/2	T3	9	7/8
		7-1/2	T3	12	7/8
		10-1/2	T3	15	7/8
		13-1/2	T3	18	7/8
		19-1/2	T3	24	7/8

Note 1: When U = 2-1/2" or less, the "U" length is manufactured straight construction and the outside diameter is determined by Series specified, for example:

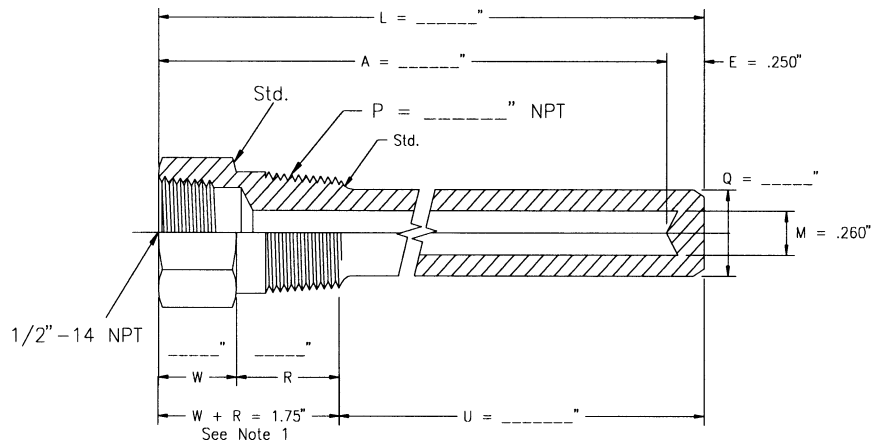
- Series R: Q1 and Q2 = 1/2" o.d. for all Process Connection sizes.
- Series S: Consult the "Series S .260" catalog page to determine the correct diameter.



TEXAS THERMOWELL, INC.
"The Thermowell People"

THREADED THERMOWELLS

SERIES S .260



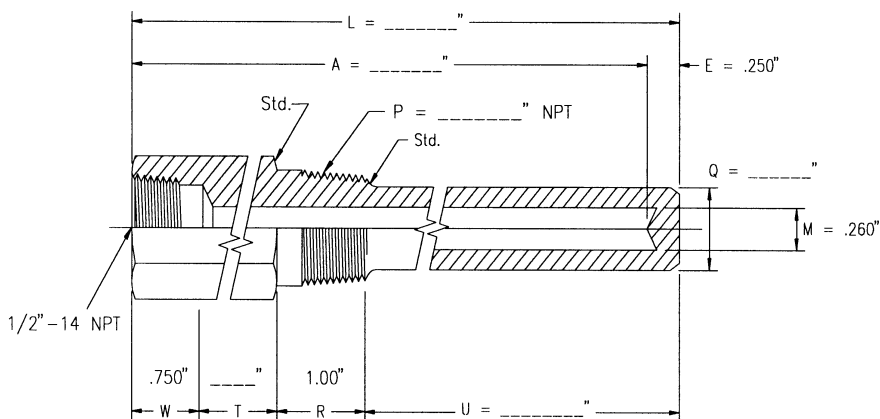
EXTERNAL THREAD P	CODE NUMBER	INSERT LENGTH U	STEM LGTH A	SHANK DIA Q
1/2" NPT	S .260 - U	2-1/2	4	1/2
		4-1/2	6	5/8
		7-1/2	9	5/8
		10-1/2	12	5/8
		13-1/2	15	5/8
		16-1/2	18	5/8
		22-1/2	24	5/8
3/4" NPT	S .260 - U	2-1/2	4	1/2
		4-1/2	6	3/4
		7-1/2	9	3/4
		10-1/2	12	3/4
		13-1/2	15	3/4
		16-1/2	18	3/4
		22-1/2	24	3/4
1" NPT	S .260 - U	2-1/2	4	3/4
		4-1/2	6	7/8
		7-1/2	9	7/8
		10-1/2	12	7/8
		13-1/2	15	7/8
		16-1/2	18	7/8
		22-1/2	24	7/8

Note 1: When "P" = 1/2" npt, W = 1.00" and R = .750"
 When "P" = 3/4" or 1" npt, W = .750" and R = 1.00"



TEXAS THERMOWELL, INC.
"The Thermowell People"

THREADED THERMOWELLS SERIES SL .260



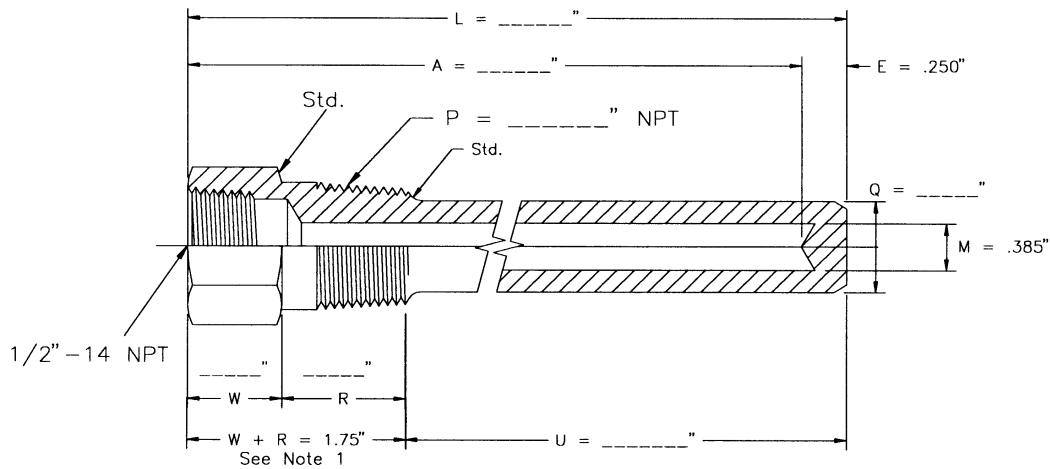
EXTERNAL THREAD P	CODE NUMBER	INSERT LENGTH U	LAG EXT T	STEM LGTH A	SHANK DIA Q
1/2" NPT	SL .260 - U	2-1/2	T2	6	1/2
		4-1/2	T3	9	5/8
		7-1/2	T3	12	5/8
		10-1/2	T3	15	5/8
		13-1/2	T3	18	5/8
		19-1/2	T3	24	5/8
3/4" NPT	SL .260 - U	2-1/2	T2	6	1/2
		4-1/2	T3	9	3/4
		7-1/2	T3	12	3/4
		10-1/2	T3	15	3/4
		13-1/2	T3	18	3/4
		19-1/2	T3	24	3/4
1" NPT	SL .260 - U	2-1/2	T2	6	3/4
		4-1/2	T3	9	7/8
		7-1/2	T3	12	7/8
		10-1/2	T3	15	7/8
		13-1/2	T3	18	7/8
		19-1/2	T3	24	7/8



TEXAS THERMOWELL, INC.
"The Thermowell People"

THREADED THERMOWELLS

SERIES S .385



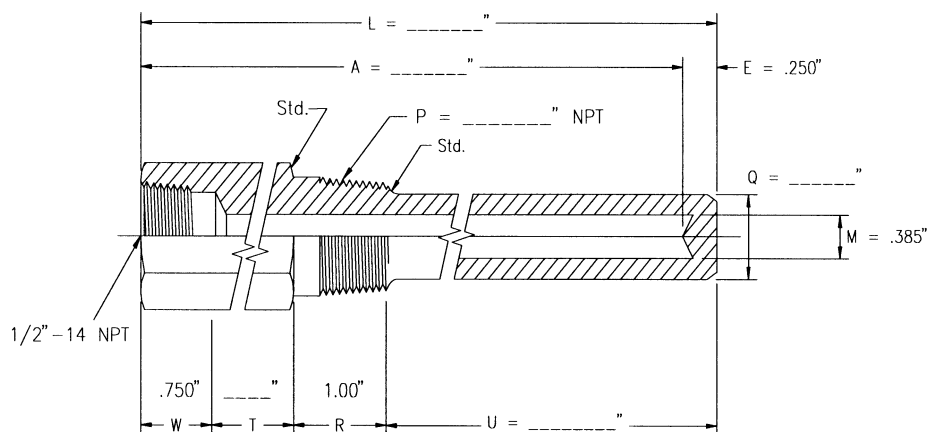
EXTERNAL THREAD P	CODE NUMBER	INSERT LENGTH U	STEM LGTH A	SHANK DIA Q
1/2" NPT	S .385 - U	2-1/2	4	.680
		4-1/2	6	
		7-1/2	9	
		10-1/2	12	
		13-1/2	15	
		16-1/2	18	
		22-1/2	24	
3/4" NPT	S .385 - U	2-1/2	4	49/64
		4-1/2	6	
		7-1/2	9	
		10-1/2	12	
		13-1/2	15	
		16-1/2	18	
		22-1/2	24	
1" NPT	S .385 - U	2-1/2	4	7/8
		4-1/2	6	
		7-1/2	9	
		10-1/2	12	
		13-1/2	15	
		16-1/2	18	
		22-1/2	24	

Note 1: When "P" = 1/2" npt, W = 1.00" and R = .750"
 When "P" = 3/4" or 1" npt, W = .750" and R = 1.00"



TEXAS THERMOWELL, INC.
"The Thermowell People"

THREADED THERMOWELLS SERIES SL .385



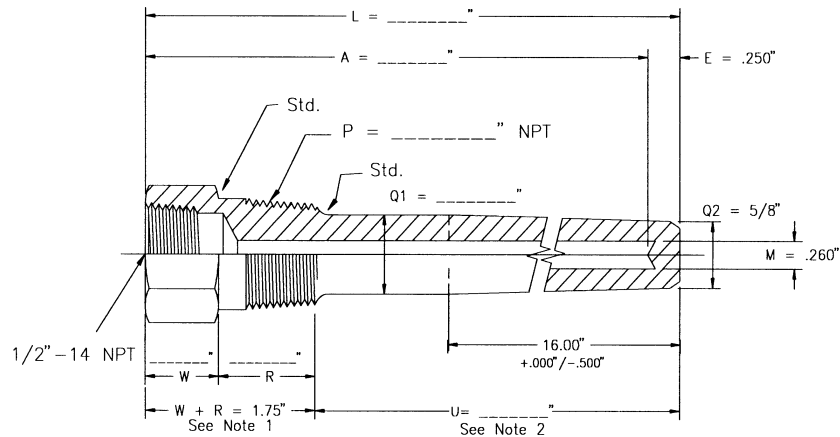
EXTERNAL THREAD P	CODE NUMBER	INSERT LENGTH U	LAG EXT T	STEM LGTH A	SHANK DIA Q
1/2" NPT	SL .385 - U	2-1/2	T2	6	.680
		4-1/2	T3	9	
		7-1/2	T3	12	
		10-1/2	T3	15	
		13-1/2	T3	18	
		19-1/2	T3	24	
3/4" NPT	SL .385 - U	2-1/2	T2	6	49/64
		4-1/2	T3	9	
		7-1/2	T3	12	
		10-1/2	T3	15	
		13-1/2	T3	18	
		19-1/2	T3	24	
1" NPT	SL .385 - U	2-1/2	T2	6	7/8
		4-1/2	T3	9	
		7-1/2	T3	12	
		10-1/2	T3	15	
		13-1/2	T3	18	
		19-1/2	T3	24	



TEXAS THERMOWELL, INC.
"The Thermowell People"

THREADED THERMOWELLS

SERIES H .260



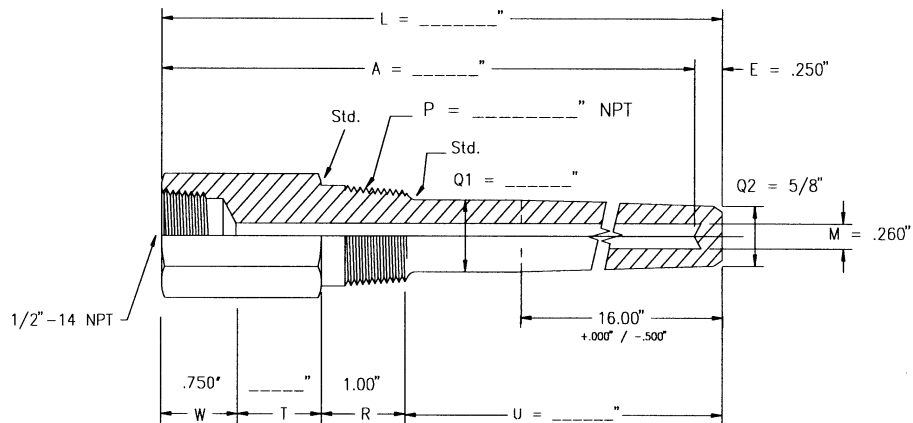
EXTERNAL THREAD P	CODE NUMBER	INSERT LENGTH U	STEM LGTH A	SHANK DIA Q1
1/2" NPT	H .260 - U	2-1/2	4	.680
		4-1/2	6	
		7-1/2	9	
		10-1/2	12	
		13-1/2	15	
		16-1/2	18	
		22-1/2	24	
3/4" NPT	H .260 - U	2-1/2	4	7/8
		4-1/2	6	
		7-1/2	9	
		10-1/2	12	
		13-1/2	15	
		16-1/2	18	
		22-1/2	24	
1" NPT	H .260 - U	2-1/2	4	1-1/16
		4-1/2	6	
		7-1/2	9	
		10-1/2	12	
		13-1/2	15	
		16-1/2	18	
		22-1/2	24	

Note 1: When "P" = 1/2" npt, W = 1.00" and R = .750"
 When "P" = 3/4" or 1" npt, W = .750" and R = 1.00"
 Note 2: Full length taper provided when "U" <= 16.00"



TEXAS THERMOWELL, INC.
"The Thermowell People"

THREADED THERMOWELLS SERIES HL .260



EXTERNAL THREAD P	CODE NUMBER	INSERT LENGTH U	LAG EXT T	STEM LGTH A	SHANK DIA Q1
1/2" NPT	HL .260 - U	2-1/2	T2	6	.680
		4-1/2	T3	9	
		7-1/2	T3	12	
		10-1/2	T3	15	
		13-1/2	T3	18	
		16-1/2	T3	24	
3/4" NPT	HL .260 - U	2-1/2	T2	6	7/8
		4-1/2	T3	9	
		7-1/2	T3	12	
		10-1/2	T3	15	
		13-1/2	T3	18	
		16-1/2	T3	24	
1" NPT	HL .260 - U	2-1/2	T2	6	1-1/16
		4-1/2	T3	9	
		7-1/2	T3	12	
		10-1/2	T3	15	
		13-1/2	T3	18	
		16-1/2	T3	24	

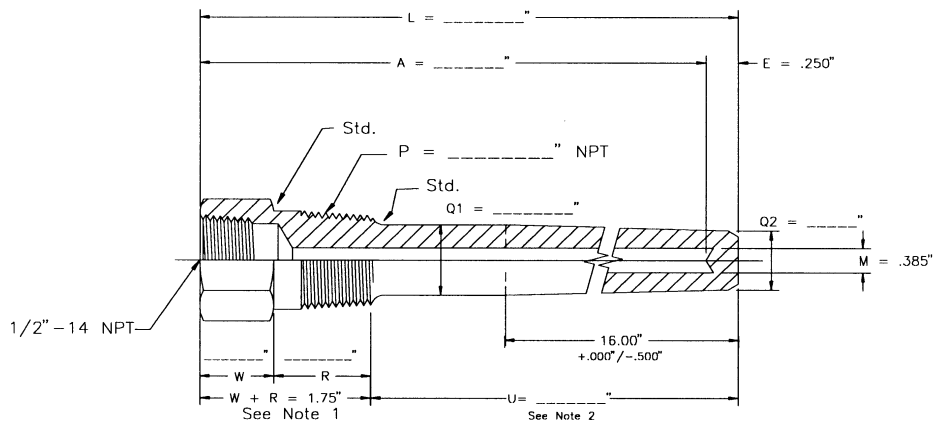
Note 1: Full length taper provided when "U" <= 16.00"



TEXAS THERMOWELL, INC.
"The Thermowell People"

THREADED THERMOWELLS

SERIES H .385



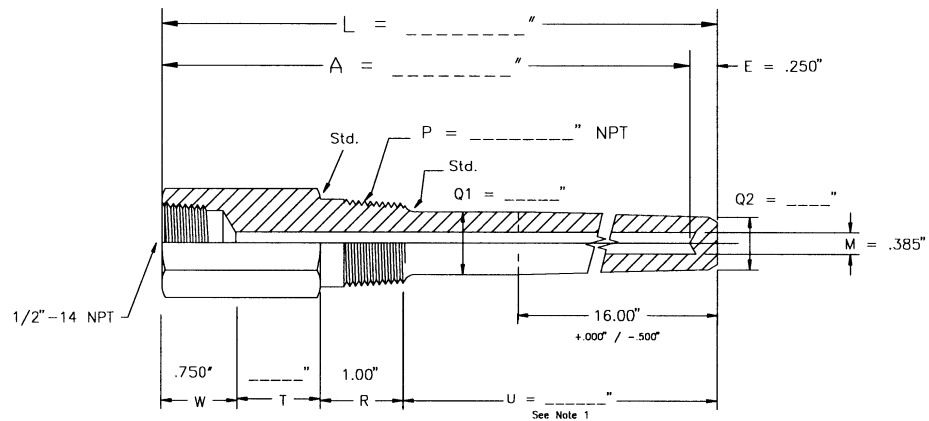
EXTERNAL THREAD P	CODE NUMBER	INSERT LENGTH U	STEM LGTH A	SHANK DIA Q1	SHANK DIA Q2
1/2" NPT	H .385 - U	2-1/2	4	.680	5/8
		4-1/2	6		
		7-1/2	9		
		10-1/2	12		
		13-1/2	15		
		16-1/2	18		
		22-1/2	24		
3/4" NPT	H .385 - U	2-1/2	4	7/8	49/64
		4-1/2	6		
		7-1/2	9		
		10-1/2	12		
		13-1/2	15		
		16-1/2	18		
		22-1/2	24		
1" NPT	H .385 - U	2-1/2	4	1-1/16	49/64
		4-1/2	6		
		7-1/2	9		
		10-1/2	12		
		13-1/2	15		
		16-1/2	18		
		22-1/2	24		

Note 1: When "P" = 1/2" npt, W = 1.00" and R = .750"
 When "P" = 3/4" or 1" npt, W = .750" and R = 1.00"
 Note 2: Full length taper provided when "U" <= 16.00"



TEXAS THERMOWELL, INC.
"The Thermowell People"

THREADED THERMOWELLS SERIES HL .385



EXTERNAL THREAD P	CODE NUMBER	INSERT LENGTH U	LAG EXT T	STEM LGTH A	SHANK DIA Q1	SHANK DIA Q2
1/2" NPT	HL .385 - U	2-1/2	T2	6	.680	5/8
		4-1/2	T3	9		
		7-1/2	T3	12		
		10-1/2	T3	15		
		13-1/2	T3	18		
		16-1/2	T3	24		
3/4" NPT	HL .385 - U	2-1/2	T2	6	7/8	49/64
		4-1/2	T3	9		
		7-1/2	T3	12		
		10-1/2	T3	15		
		13-1/2	T3	18		
		16-1/2	T3	24		
1" NPT	HL .385 - U	2-1/2	T2	6	1-1/16	49/64
		4-1/2	T3	9		
		7-1/2	T3	12		
		10-1/2	T3	15		
		13-1/2	T3	18		
		16-1/2	T3	24		

Note 1: Full length taper provided when "U" <= 16.00"



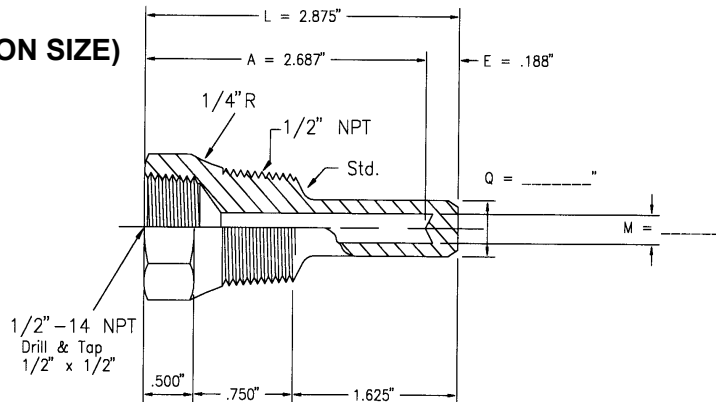
TEXAS THERMOWELL, INC.
"The Thermowell People"

THREADED THERMOWELLS SERIES LS

SERIES

1/2" LS

(1/2" PROCESS CONNECTION SIZE)



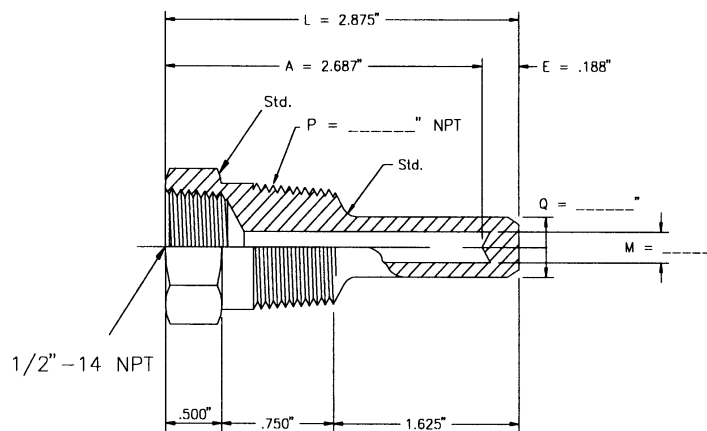
Note 1: When "M" = .260, "Q" = .500
 When "M" = .385, "Q" = .680

SERIES

3/4" LS

&

1" LS

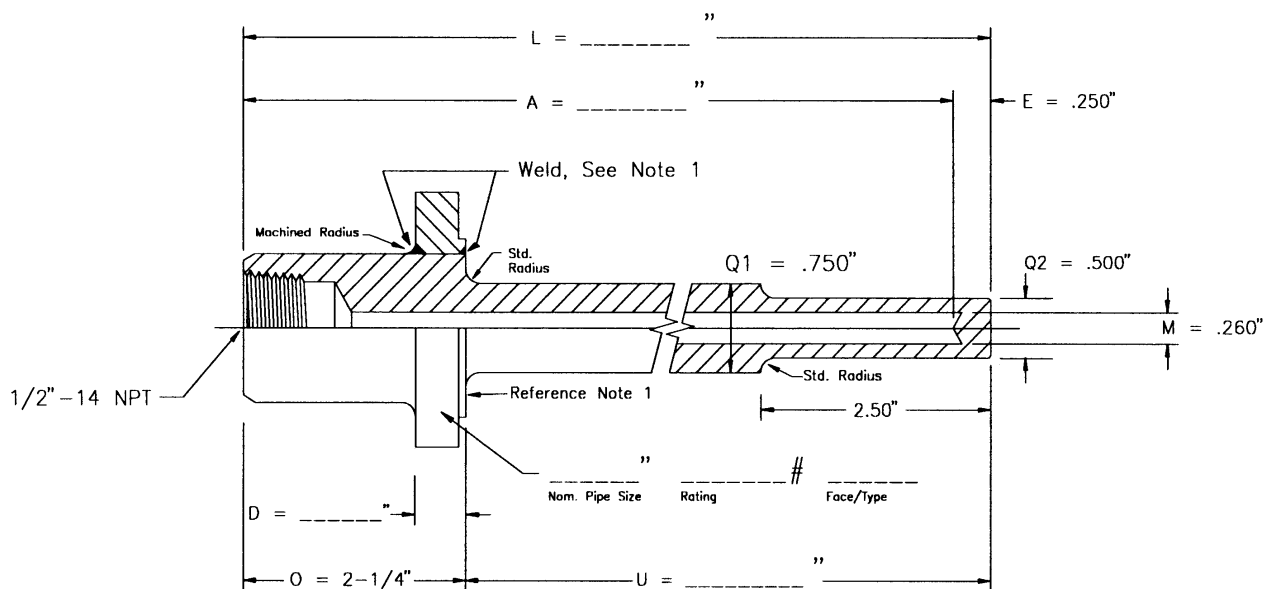


Note 1: When "M" = .260, "Q" = .500
 When "M" = .385, "Q" = .766



TEXAS THERMOWELL, INC.
"The Thermowell People"

FLANGED THERMOWELLS SERIES FR .260



FLG (NPS) SIZE	RATING	FACE / TYPE	CODE NUMBER	INSERT LENGTH U	STEM LGTH A
*	*	*	Ref. Note 2 -U	2	4
			FR .260 - U	4	6
				7	9
				10	12
				13	15
				16	18
				22	24

* Customer supplied specifications.

Note 1: Reference Doc. No. TX-PFT for welding and gasket surface finish information.

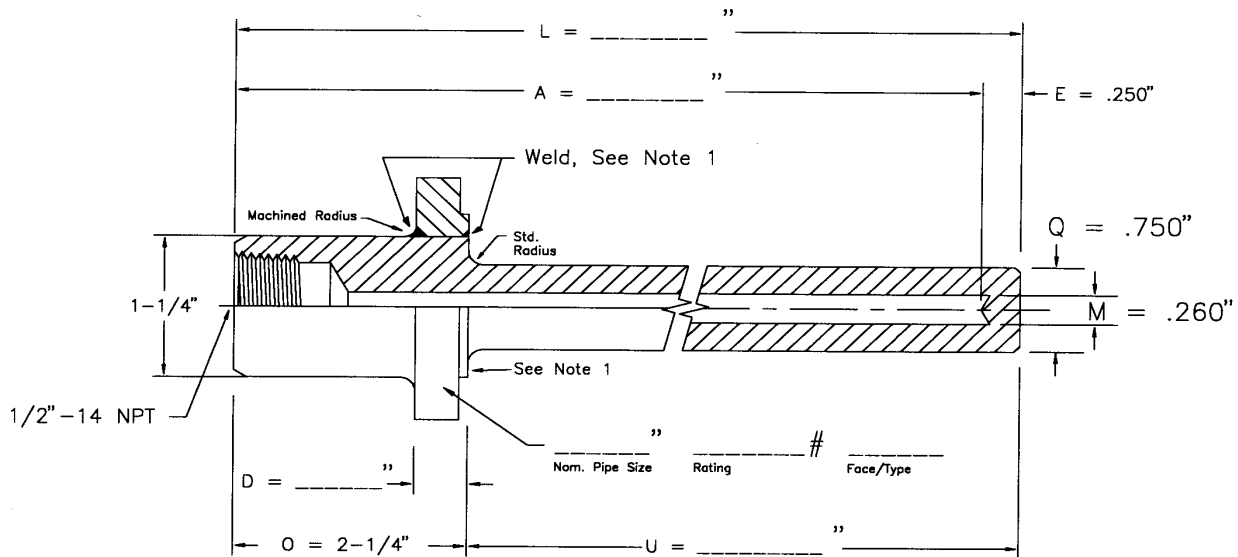
Note 2: When U = 2-1/2" or less, the "U" length is manufactured straight construction and the outside diameter is determined by Series specified, for example:

- Series FR: Q1 and Q2 = 1/2" o.d. for all Process Connection sizes.
- Series FS: Consult the "Series FS .260" catalog page to determine the correct diameter.



TEXAS THERMOWELL, INC.
"The Thermowell People"

FLANGED THERMOWELLS SERIES FS .260



FLG (NPS) SIZE	RATING	FACE / TYPE	CODE NUMBER	INSERT LENGTH U	STEM LGTH A
*	*	*	FS .260 - U	2	4
				4	6
				7	9
				10	12
				13	15
				16	18
				22	24

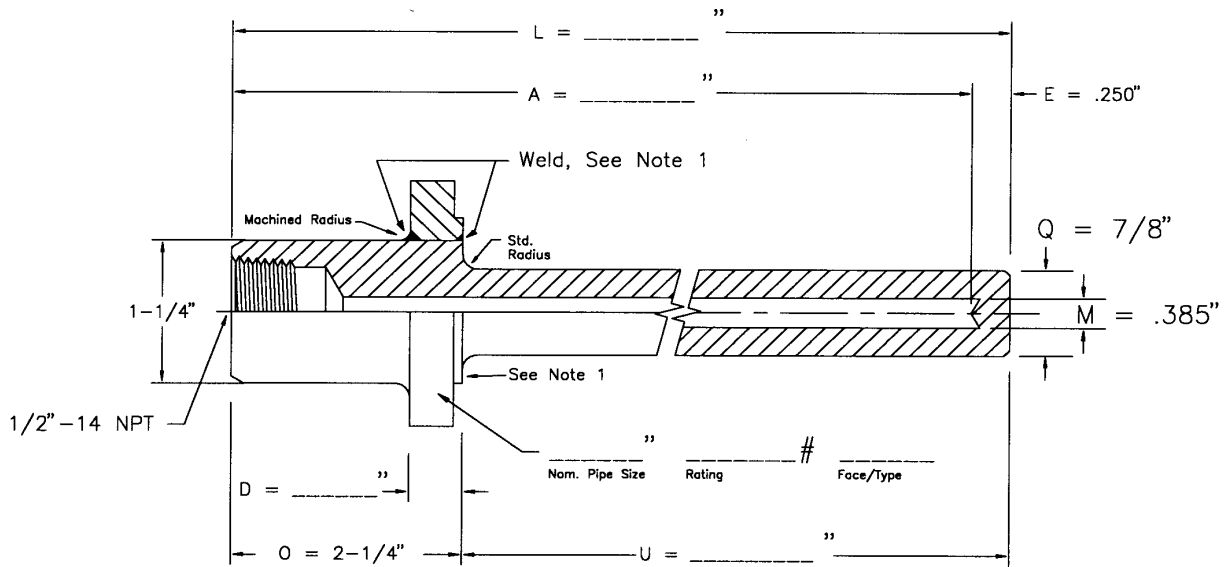
* Customer supplied specifications.

Note 1: Reference Doc. No. TX-PFT for welding and gasket surface finish information.



TEXAS THERMOWELL, INC.
"The Thermowell People"

FLANGED THERMOWELLS SERIES FS .385



FLG (NPS) SIZE	RATING	FACE / TYPE	CODE NUMBER	INSERT LENGTH U	STEM LGTH A
*	*	*	FS .385 - U	2	4
				4	6
				7	9
				10	12
				13	15
				16	18
				22	24

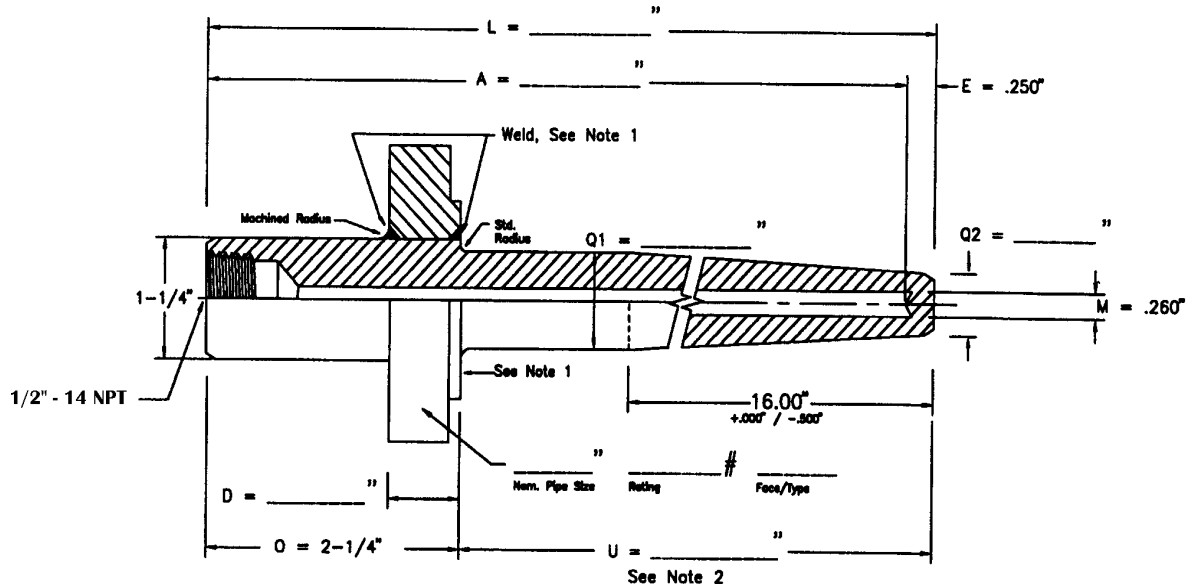
* Customer supplied specifications.

Note 1: Reference Doc. No. TX-PFT for welding and gasket surface finish information.



TEXAS THERMOWELL, INC.
"The Thermowell People"

FLANGED THERMOWELLS SERIES FH .260



FLG (NPS) SIZE	RATING	FACE / TYPE	CODE NUMBER	INSERT LENGTH U	STEM LGTH A	SHANK DIA Q1	SHANK DIA Q2
3/4"	*	*	FH .260 - U	2	4	3/4"	5/8"
				4	6		
				7	9		
				10	12		
				13	15		
				16	18		
				22	24		
1"	*	*	FH .260 - U	2	4	7/8"	5/8"
				4	6		
				7	9		
				10	12		
				13	15		
				16	18		
				22	24		
1-1/2" OR LARGER	*	*	FH .260 - U	2	4	1-1/16"	5/8"
				4	6		
				7	9		
				10	12		
				13	15		
				16	18		
				22	24		

* Customer supplied specifications.

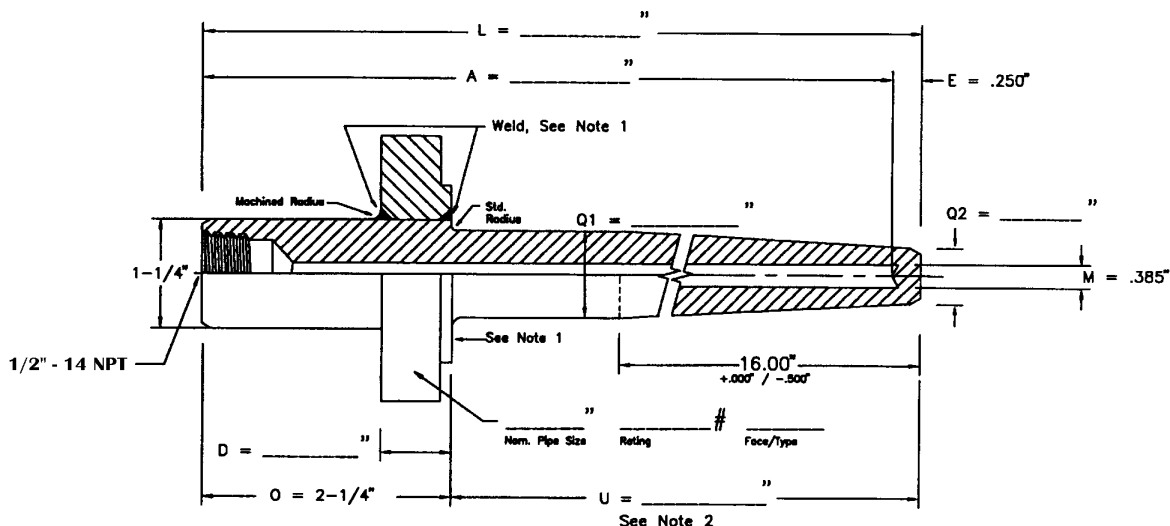
Note 1: Reference Doc. No. TX-PFT for welding and gasket surface finish information.

Note 2: Full length taper provided when "U" <= 16.00"



TEXAS THERMOWELL, INC.
"The Thermowell People"

FLANGED THERMOWELLS SERIES FH .385



FLG (NPS) SIZE	RATING	FACE / TYPE	CODE NUMBER	INSERT LENGTH U	STEM LGTH A	SHANK DIA Q1	SHANK DIA Q2
3/4"	*	*	FH .385 - U	2	4	3/4"	5/8"
				4	6		
				7	9		
				10	12		
				13	15		
				16	18		
1"	*	*	FH .385 - U	22	24	7/8"	49/64"
				2	4		
				4	6		
				7	9		
				10	12		
				13	15		
1-1/2" OR LARGER	*	*	FH .385 - U	16	18	1-1/16"	49/64"
				22	24		
				2	4		
				4	6		
				7	9		
				10	12		

* Customer supplied specifications.

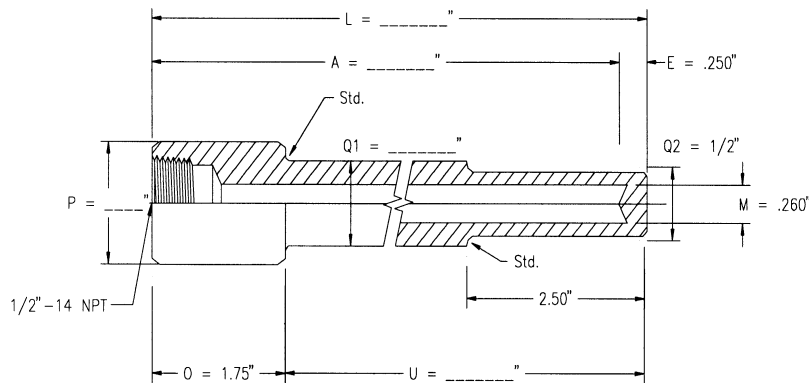
Note 1: Reference Doc. No. TX-PFT for welding and gasket surface finish information.

Note 2: Full length taper provided when "U" <= 16.00"



TEXAS THERMOWELL, INC.
"The Thermowell People"

SOCKET-WELD THERMOWELLS SERIES SWR .260



PIPE SIZE P	ACTUAL DIA P	CODE NUMBER	INSERT LENGTH U	STEM LGTH A	SHANK DIA Q1
3/4" Nominal	1.050	Ref. Note 1 - U SWR .260 - U	2-1/2	4	1/2
			4-1/2	6	3/4
			7-1/2	9	3/4
			10-1/2	12	3/4
			13-1/2	15	3/4
			16-1/2	18	3/4
			22-1/2	24	3/4
1" Nominal	1.315	Ref. Note 1 - U SWR .260 - U	2-1/2	4	3/4
			4-1/2	6	7/8
			7-1/2	9	7/8
			10-1/2	12	7/8
			13-1/2	15	7/8
			16-1/2	18	7/8
			22-1/2	24	7/8

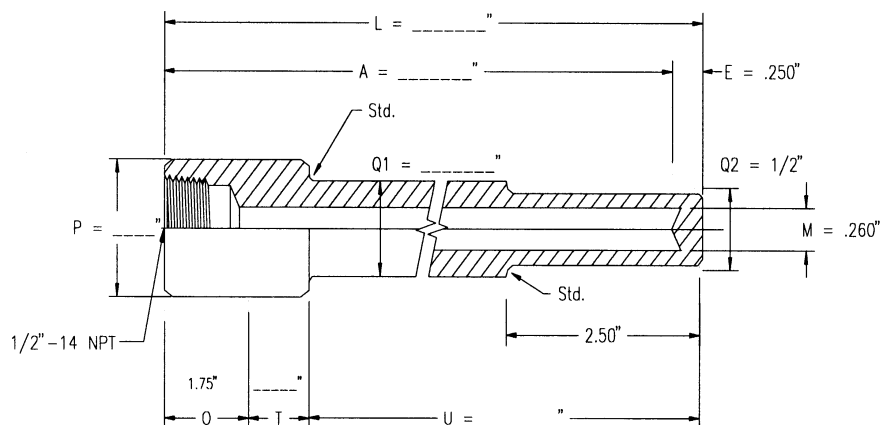
Note 1: When U = 2-1/2" or less, the "U" length is manufactured straight construction and the outside diameter is determined by Series specified, for example:

- Series SWR: Q1 and Q2 = 1/2" o.d. for all Process Connection sizes.
- Series SWS: Consult the "Series SWS .260" catalog page to determine the correct diameter.



TEXAS THERMOWELL, INC.
"The Thermowell People"

SOCKET-WELD THERMOWELLS SERIES SWRL .260



PIPE SIZE P	ACTUAL DIA P	CODE NUMBER	INSERT LENGTH U	LAG EXT T	STEM LGTH A	SHANK DIA Q1
3/4" Nominal	1.050	Ref. Note 1 - U SWRL .260 - U	2-1/2	T2	6	1/2
			4-1/2	T3	9	3/4
			7-1/2	T3	12	3/4
			10-1/2	T3	15	3/4
			13-1/2	T3	18	3/4
			16-1/2	T3	21	3/4
			19-1/2	T3	24	3/4
1" Nominal	1.315	Ref. Note 1 - U SWRL .260 - U	2-1/2	T2	6	3/4
			4-1/2	T3	9	7/8
			7-1/2	T3	12	7/8
			10-1/2	T3	15	7/8
			13-1/2	T3	18	7/8
			16-1/2	T3	21	7/8
			19-1/2	T3	24	7/8

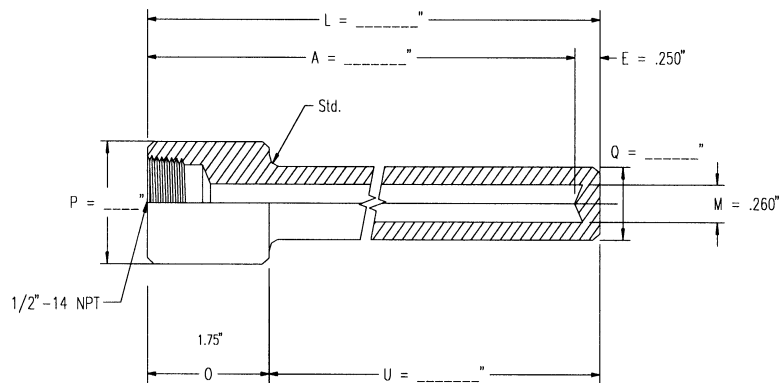
Note 1: When U = 2-1/2" or less, the "U" length is manufactured straight construction and the outside diameter is determined by Series specified, for example:

- Series SWRL: Q1 and Q2 = Q1 Dimension in above matrix.
- Series SWSL: Consult the "Series SWSL .260" catalog page to determine the correct diameter.



TEXAS THERMOWELL, INC.
"The Thermowell People"

SOCKET-WELD THERMOWELLS SERIES SWS .260

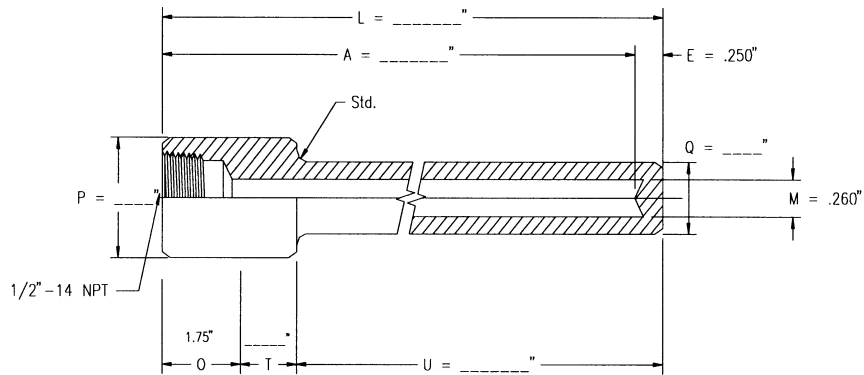


PIPE SIZE P	ACTUAL DIA P	CODE NUMBER	INSERT LENGTH U	STEM LGTH A	SHANK DIA Q
3/4" Nominal	1.050	SWS .260 - U	2-1/2	4	1/2
			4-1/2	6	3/4
			7-1/2	9	3/4
			10-1/2	12	3/4
			13-1/2	15	3/4
			16-1/2	18	3/4
			22-1/2	24	3/4
1" Nominal	1.315	SWS .260 - U	2-1/2	4	3/4
			4-1/2	6	7/8
			7-1/2	9	7/8
			10-1/2	12	7/8
			13-1/2	15	7/8
			16-1/2	18	7/8
			22-1/2	24	7/8



TEXAS THERMOWELL, INC.
"The Thermowell People"

SOCKET-WELD THERMOWELLS SERIES SWSL .260

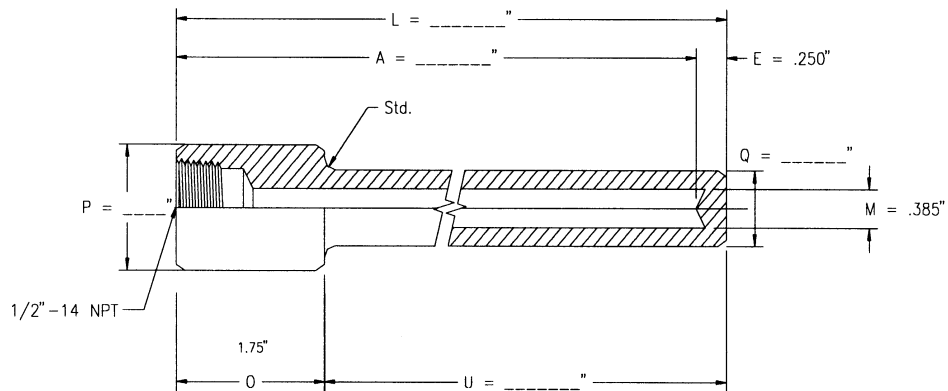


PIPE SIZE P	ACTUAL DIA P	CODE NUMBER	INSERT LENGTH U	LAG EXT T	STEM LGTH A	SHANK DIA Q
3/4" Nominal	1.050	SWSL .260 - U	2-1/2	T2	6	1/2
			4-1/2	T3	9	3/4
			7-1/2	T3	12	3/4
			10-1/2	T3	15	3/4
			13-1/2	T3	18	3/4
			16-1/2	T3	21	3/4
			19-1/2	T3	24	3/4
1" Nominal	1.315	SWSL .260 - U	2-1/2	T2	6	3/4
			4-1/2	T3	9	7/8
			7-1/2	T3	12	7/8
			10-1/2	T3	15	7/8
			13-1/2	T3	18	7/8
			16-1/2	T3	21	7/8
			19-1/2	T3	24	7/8



TEXAS THERMOWELL, INC.
"The Thermowell People"

SOCKET-WELD THERMOWELLS SERIES SWS .385

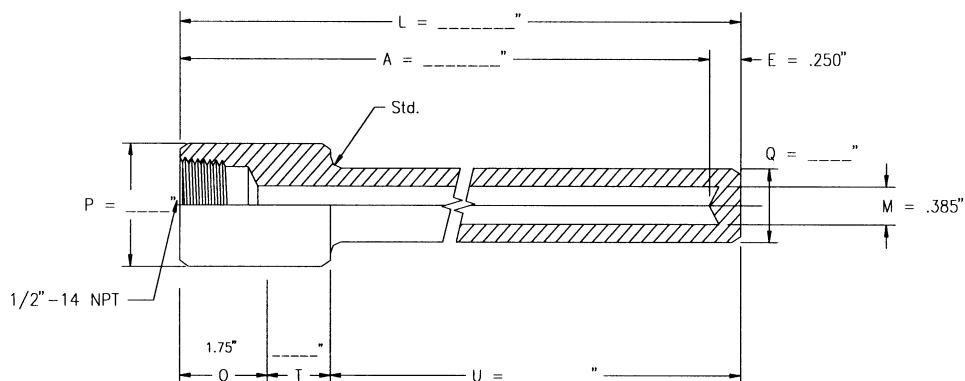


PIPE SIZE P	ACTUAL DIA P	CODE NUMBER	INSERT LENGTH U	STEM LGTH A	SHANK DIA Q1
3/4" Nominal	1.050	SWS .385 - U	2-1/2	4	49/64
			4-1/2	6	
			7-1/2	9	
			10-1/2	12	
			13-1/2	15	
			16-1/2	18	
			22-1/2	24	
1" Nominal	1.315	SWS .385 - U	2-1/2	4	49/64
			4-1/2	6	7/8
			7-1/2	9	7/8
			10-1/2	12	7/8
			13-1/2	15	7/8
			16-1/2	18	7/8
			22-1/2	24	7/8



TEXAS THERMOWELL, INC.
"The Thermowell People"

SOCKET-WELD THERMOWELLS SERIES SWSL .385

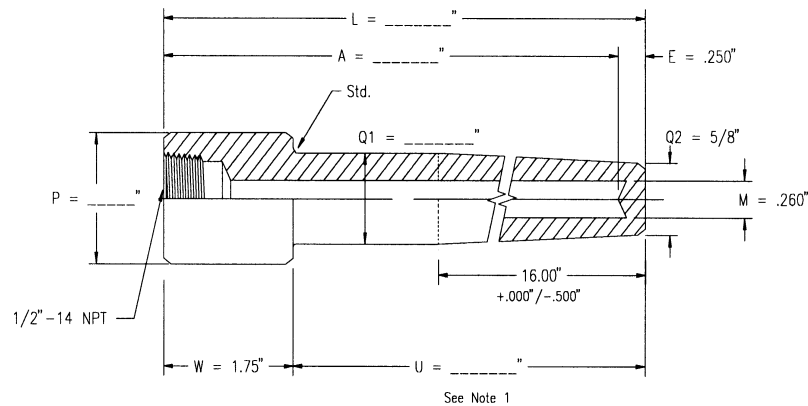


PIPE SIZE P	ACTUAL DIA P	CODE NUMBER	INSERT LENGTH U	LAG EXT T	STEM LGTH A	SHANK DIA Q
3/4" Nominal	1.050	SWSL .385 - U	2-1/2	T2	6	49/64
			4-1/2	T3	9	
			7-1/2	T3	12	
			10-1/2	T3	15	
			13-1/2	T3	18	
			16-1/2	T3	21	
			19-1/2	T3	24	
1" Nominal	1.315	SWSL .385 - U	2-1/2	T2	6	49/64
			4-1/2	T3	9	7/8
			7-1/2	T3	12	7/8
			10-1/2	T3	15	7/8
			13-1/2	T3	18	7/8
			16-1/2	T3	21	7/8
			19-1/2	T3	24	7/8



TEXAS THERMOWELL, INC.
"The Thermowell People"

SOCKET-WELD THERMOWELLS SERIES SWH .260



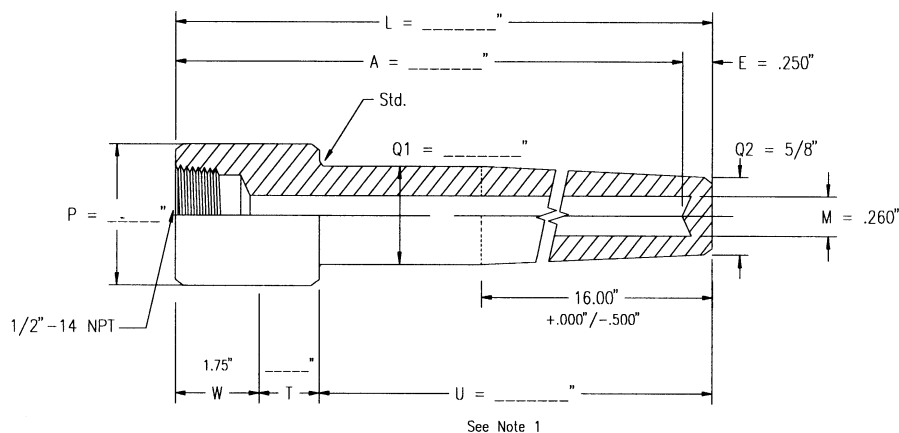
PIPE SIZE P	ACTUAL DIA P	CODE NUMBER	INSERT LENGTH U	STEM LGTH A	SHANK DIA Q1
3/4" Nominal	1.050	SWH .260 - U	2-1/2	4	3/4"
			4-1/2	6	
			7-1/2	9	
			10-1/2	12	
			13-1/2	15	
			16-1/2	18	
			22-1/2	24	
1" Nominal	1.315	SWH .260 - U	2-1/2	4	1"
			4-1/2	6	
			7-1/2	9	
			10-1/2	12	
			13-1/2	15	
			16-1/2	18	
			22-1/2	24	

Note 1: Full length taper provided when "U" <= 16.00"



TEXAS THERMOWELL, INC.
"The Thermowell People"

SOCKET-WELD THERMOWELLS SERIES SWHL .260



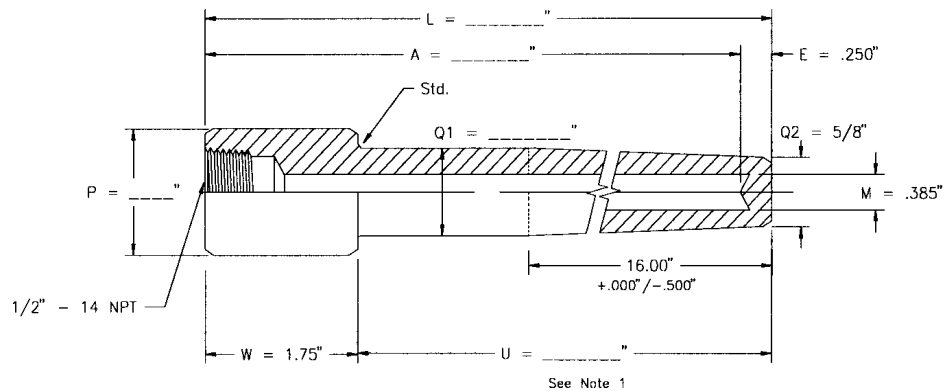
PIPE SIZE P	ACTUAL DIA P	CODE NUMBER	INSERT LENGTH U	LAG EXT T	STEM LGTH A	SHANK DIA Q1
3/4" Nominal	1.050	SWHL .260 - U	2-1/2	T2	6	3/4"
			4-1/2	T3	9	
			7-1/2	T3	12	
			10-1/2	T3	15	
			13-1/2	T3	18	
			16-1/2	T3	21	
			19-1/2	T3	24	
1" Nominal	1.315	SWHL .260 - U	2-1/2	T2	6	1"
			4-1/2	T3	9	
			7-1/2	T3	12	
			10-1/2	T3	15	
			13-1/2	T3	18	
			16-1/2	T3	21	
			19-1/2	T3	24	

Note 1: Full length taper provided when "U" <= 16.00"



TEXAS THERMOWELL, INC.
"The Thermowell People"

SOCKET-WELD THERMOWELLS SERIES SWH . 385



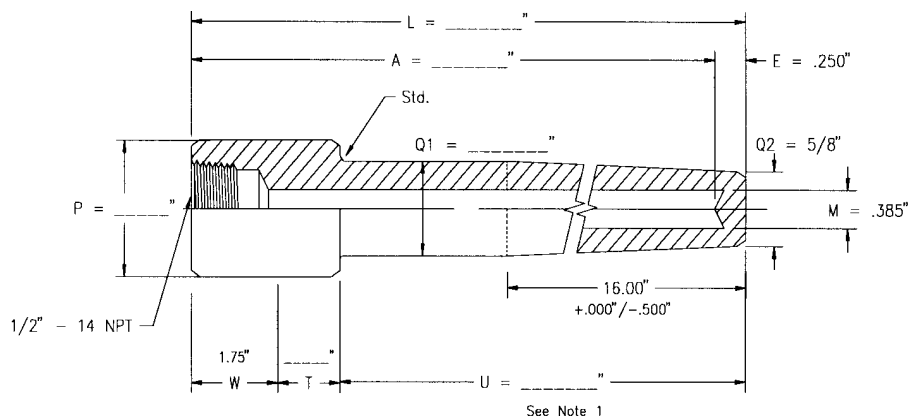
PIPE SIZE P	ACTUAL DIA P	CODE NUMBER	INSERT LENGTH U	STEM LGTH A	SHANK DIA Q1
3/4" Nominal	1.050	SWH .385 - U	2-1/2	4	3/4"
			4-1/2	6	
			7-1/2	9	
			10-1/2	12	
			13-1/2	15	
			16-1/2	18	
			22-1/2	24	
1" Nominal	1.315	SWH .385 - U	2-1/2	4	1"
			4-1/2	6	
			7-1/2	9	
			10-1/2	12	
			13-1/2	15	
			16-1/2	18	
			22-1/2	24	

Note 1: Full length taper provided when "U" <= 16.00"



TEXAS THERMOWELL, INC.
"The Thermowell People"

SOCKET-WELD THERMOWELLS SERIES SWHL .385



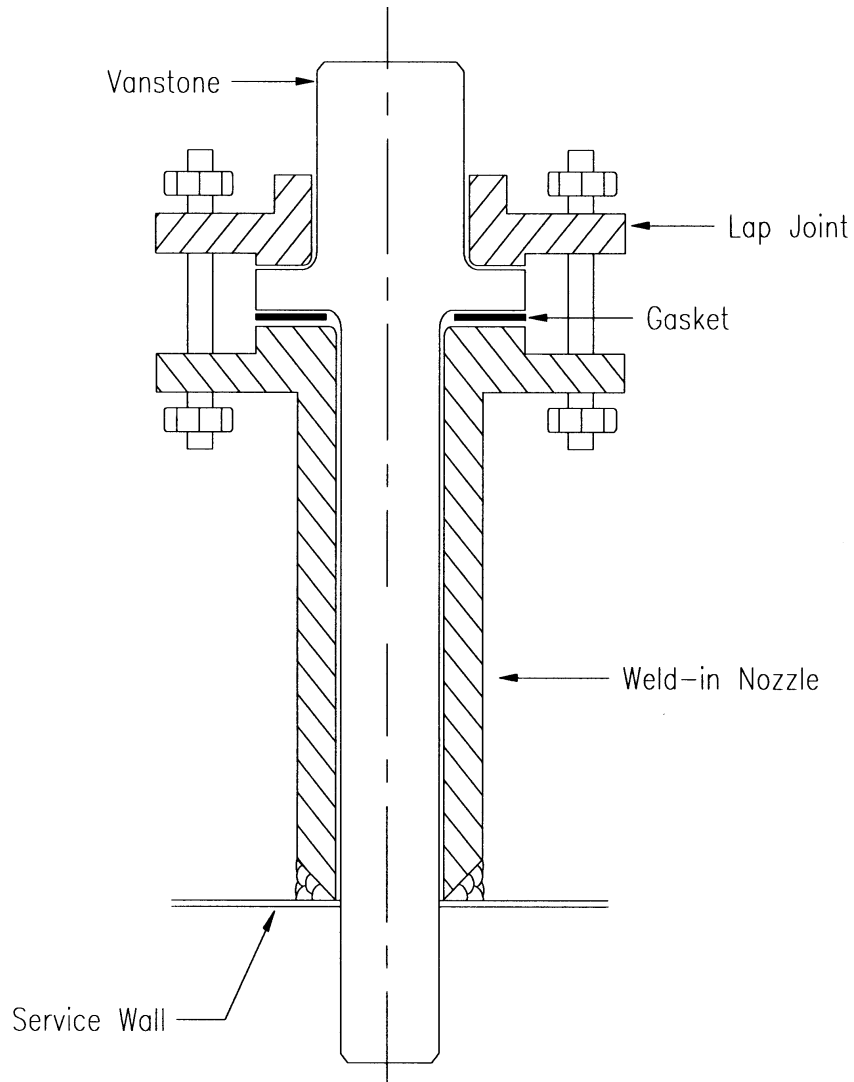
PIPE SIZE P	ACTUAL DIA P	CODE NUMBER	INSERT LENGTH U	LAG EXT T	STEM LGTH A	SHANK DIA Q1
3/4" Nominal	1.050	SWHL .385 - U	2-1/2	T2	6	3/4"
			4-1/2	T3	9	
			7-1/2	T3	12	
			10-1/2	T3	15	
			13-1/2	T3	18	
			16-1/2	T3	21	
			19-1/2	T3	24	
1" Nominal	1.315	SWHL .385 - U	2-1/2	T2	6	1"
			4-1/2	T3	9	
			7-1/2	T3	12	
			10-1/2	T3	15	
			13-1/2	T3	18	
			16-1/2	T3	21	
			19-1/2	T3	24	

Note 1: Full length taper provided when "U" <= 16.00"



TEXAS THERMOWELL, INC.
"The Thermowell People"

VANSTONE ASSEMBLY

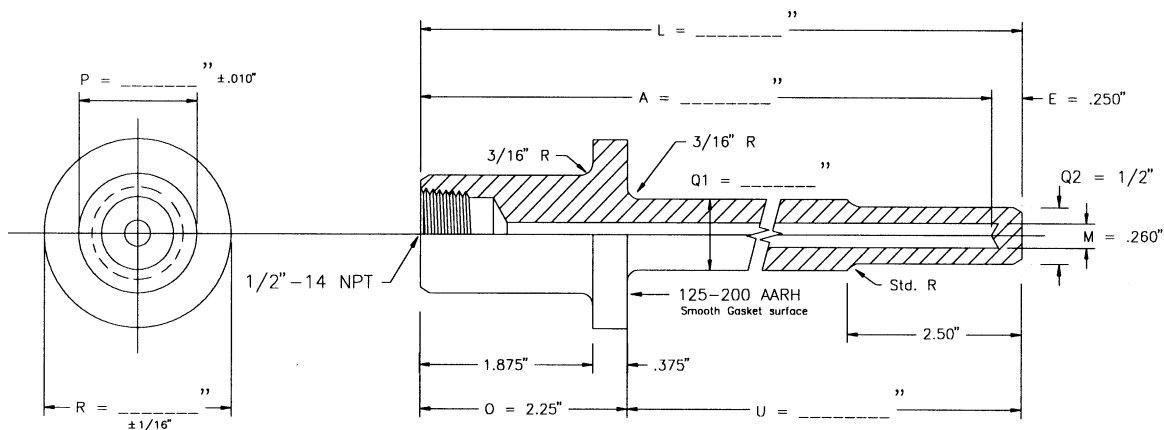




TEXAS THERMOWELL, INC.
"The Thermowell People"

VANSTONE THERMOWELLS

SERIES VR .260



PIPE SIZE	ACTUAL DIA P	RAISED FACE DIA R	CODE NUMBER	INSERT LENGTH U	STEM LGTH A	SHANK DIA Q1	SHANK DIA Q2
1" Nominal	1.315	2"	Ref. Note 1 - U VR .260 - U	2	4	3/4"	1/2"
				4	6		
				7	9		
				10	12		
				13	15		
				16	18		
1-1/2" Nominal	1.900	2-7/8"	Ref. Note 1 - U VR .260 - U	2	4	7/8"	1/2"
				4	6		
				7	9		
				10	12		
				13	15		
				16	18		
2" Nominal	2.375	3-5/8"	Ref. Note 1 - U VR .260 - U	2	4	(Ref. Note 2)	(Ref. Note 2)
				4	6		
				7	9		
				10	12		
				13	15		
				16	18		
				22	24		

Note 1: When U = 2" or less, the "U" length is manufactured straight construction and the outside diameter is determined by Series specified, for example:

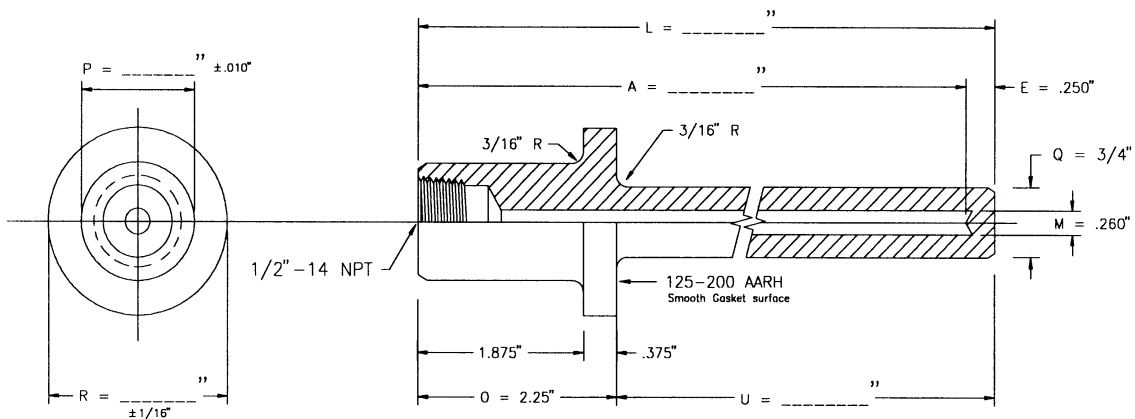
- Series VR: Q1 and Q2 = 1/2" o.d. for all Process Connection sizes.
- Series VS: Consult the "Series VS .260" catalog page to determine the correct diameter.

Note 2: Customer specified Q1 and Q2 dimensions.



TEXAS THERMOWELL, INC.
"The Thermowell People"

VANSTONE THERMOWELLS SERIES VS .260



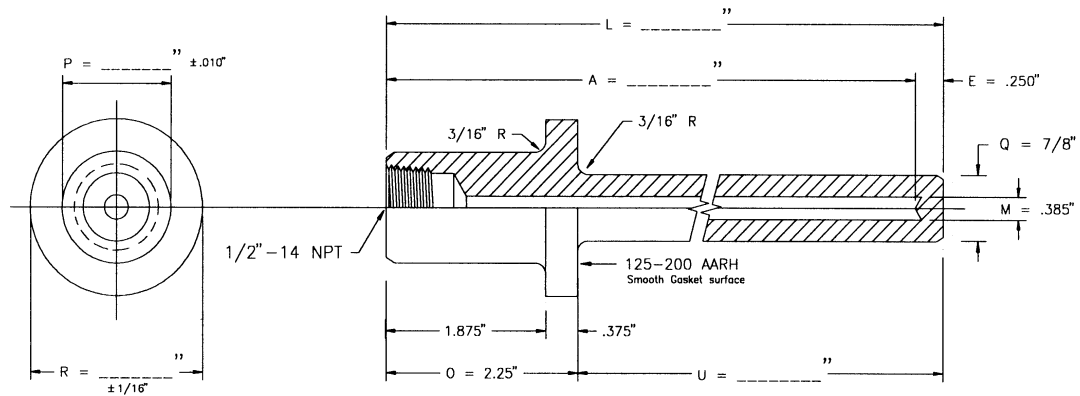
PIPE SIZE	ACTUAL DIA P	RAISED FACE DIA R	CODE NUMBER	INSERT LENGTH U	STEM LGTH A
1" Nominal	1.315	2"	VS .260 - U	2	4
1-1/2" Nominal	1.900	2-7/8"		4	6
				7	9
				10	12
2" Nominal (Ref. Note 1)	2.375	3-5/8"		13	15
				16	18
				22	24

Note 1: Customer specified Q1 and Q2 dimensions.



TEXAS THERMOWELL, INC.
"The Thermowell People"

VANSTONE THERMOWELLS SERIES VS .385



PIPE SIZE	ACTUAL DIA P	RAISED FACE DIA R	CODE NUMBER	INSERT LENGTH U	STEM LGTH A
1" Nominal	1.315	2"	VS .365 - U	2	4
1-1/2" Nominal	1.900	2-7/8"		4	6
				7	9
				10	12
2" Nominal (Ref. Note 1)	2.375	3-5/8"		13	15
				16	18
				22	24

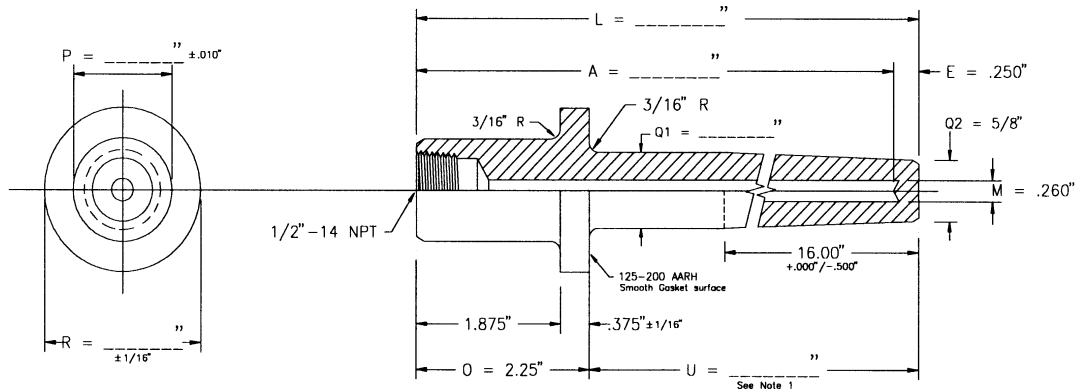
Note 1: Customer specified Q1 and Q2 dimensions.



TEXAS THERMOWELL, INC.
"The Thermowell People"

VANSTONE THERMOWELLS

SERIES VH .260



PIPE SIZE	ACTUAL DIA P	RAISED FACE DIA R	CODE NUMBER	INSERT LENGTH U	STEM LGTH A	SHANK DIA Q1	SHANK DIA Q2
1" Nominal	1.315	2"	VH .260 - U	2 4 7 10 13 16 22	4 6 9 12 15 18 24	7/8"	5/8"
1-1/2" Nominal	1.900	2-7/8"	VH .260 - U	2 4 7 10 13 16 22	4 6 9 12 15 18 24	1-1/16"	5/8"
2" Nominal	2.375	3-5/8"	VH .260 - U	2 4 7 10 13 16 22	4 6 9 12 15 18 24	(Ref. Note 2)	(Ref. Note 2)

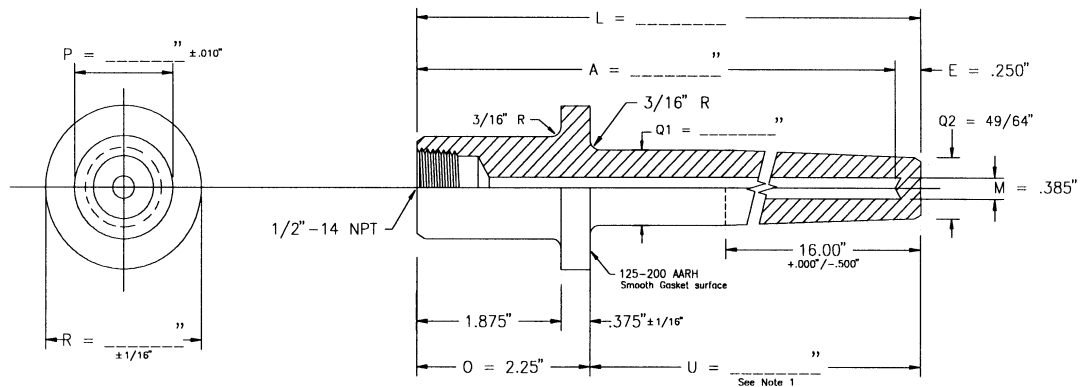
Note 1: Full length taper provided when "U" <= 16.00"

Note 2: Customer specified Q1 and Q2 dimensions.



TEXAS THERMOWELL, INC.
"The Thermowell People"

VANSTONE THERMOWELLS SERIES VH .385



PIPE SIZE	ACTUAL DIA P	RAISED FACE DIA R	CODE NUMBER	INSERT LENGTH U	STEM LGTH A	SHANK DIA Q1	SHANK DIA Q2
1" Nominal	1.315	2"	VH .365 - U	2	4	7/8"	49/64"
				4	6		
				7	9		
				10	12		
				13	15		
				16	18		
				22	24		
1-1/2" Nominal	1.900	2-7/8"	VH .365 - U	2	4	1-1/16"	49/64"
				4	6		
				7	9		
				10	12		
				13	15		
				16	18		
				22	24		
2" Nominal	2.375	3-5/8"	VH .365 - U	2	4	(Ref. Note 2)	(Ref. Note 2)
				4	6		
				7	9		
				10	12		
				13	15		
				16	18		
				22	24		

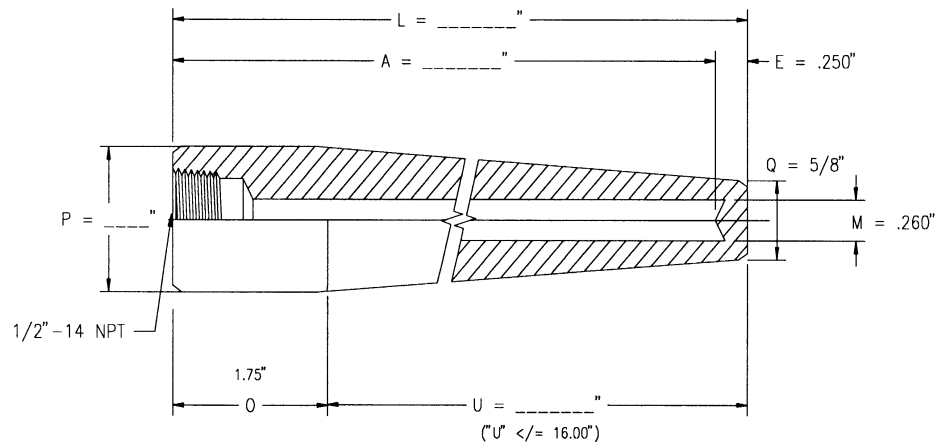
Note 1: Full length taper provided when "U" <= 16.00"

Note 2: Customer specified Q1 and Q2 dimensions.



TEXAS THERMOWELL, INC.
"The Thermowell People"

WELD-IN THERMOWELLS SERIES WIH .260



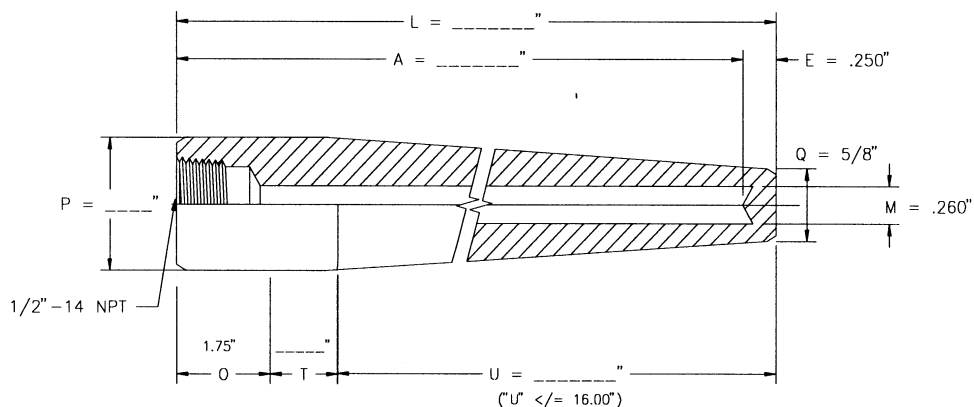
PIPE SIZE P	ACTUAL DIA P	CODE NUMBER	INSERT LENGTH U	STEM LGTH A
3/4" Nominal	1.050	WIH .260 - U	2-1/2	4
			4-1/2	6
1" Nominal	1.315		7-1/2	9
			10-1/2	12
N/A	1.375		13-1/2	15
			16-1/2	18
N/A	1.500		22-1/2	24



TEXAS THERMOWELL, INC.
"The Thermowell People"

WELD-IN THERMOWELLS

SERIES WIHL .260

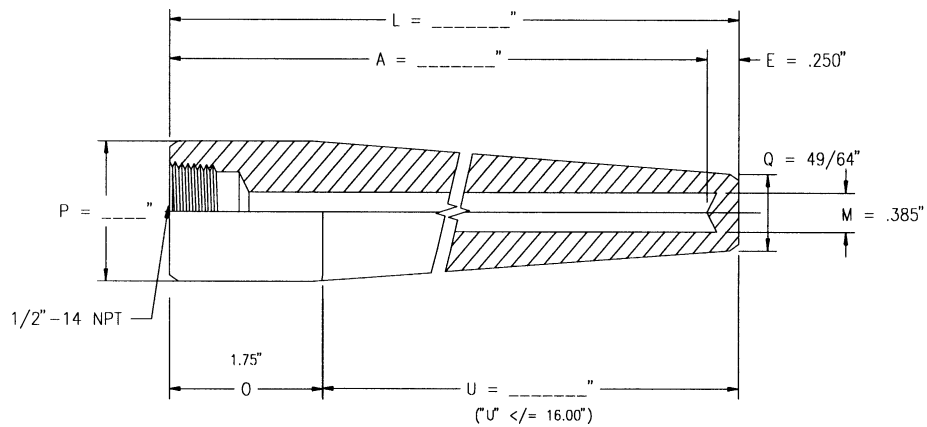


PIPE SIZE P	ACTUAL DIA P	CODE NUMBER	INSERT LENGTH U	LAG EXT T	STEM LGTH A
3/4" Nominal	1.050	WIHL .260 - U	2-1/2	T2	6
			4-1/2	T3	9
1" Nominal	1.315		7-1/2	T3	12
			10-1/2	T3	15
N/A	1.375		13-1/2	T3	18
N/A	1.500		19-1/2	T3	24



TEXAS THERMOWELL, INC.
"The Thermowell People"

WELD-IN THERMOWELLS SERIES WIH .385



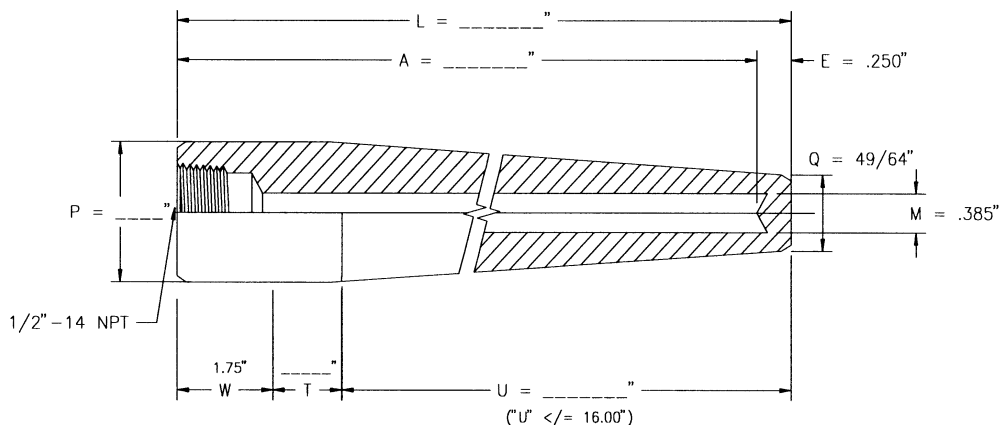
PIPE SIZE P	ACTUAL DIA P	CODE NUMBER	INSERT LENGTH U	STEM LGTH A
3/4" Nominal	1.050	WIH .385 - U	2-1/2	4
			4-1/2	6
1" Nominal	1.315		7-1/2	9
			10-1/2	12
N/A	1.375		13-1/2	15
			16-1/2	18
N/A	1.500		22-1/2	24



TEXAS THERMOWELL, INC.
"The Thermowell People"

WELD-IN THERMOWELLS

SERIES WIHL .385



PIPE SIZE P	ACTUAL DIA P	CODE NUMBER	INSERT LENGTH U	LAG EXT T	STEM LGTH A
3/4" Nominal	1.050	WIHL .385 - U	2-1/2	T2	6
			4-1/2	T3	9
1" Nominal	1.315		7-1/2	T3	12
			10-1/2	T3	15
N/A	1.375		13-1/2	T3	18
N/A	1.500		19-1/2	T3	24

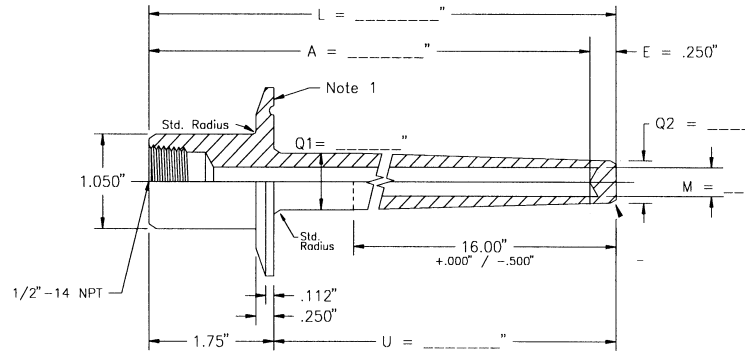


TEXAS THERMOWELL, INC.
"The Thermowell People"

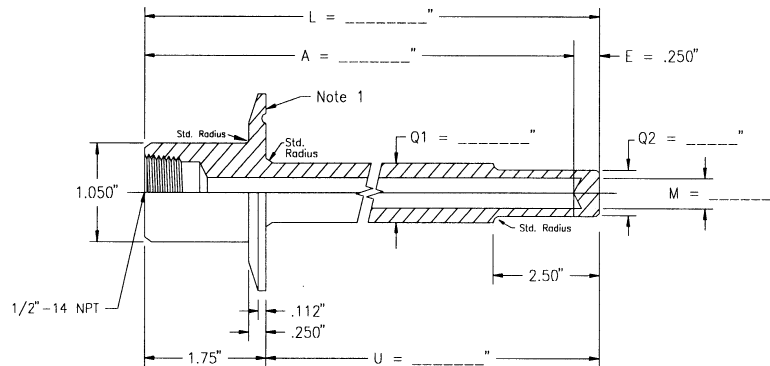
SANITARY THERMOWELLS

SERIES: EC

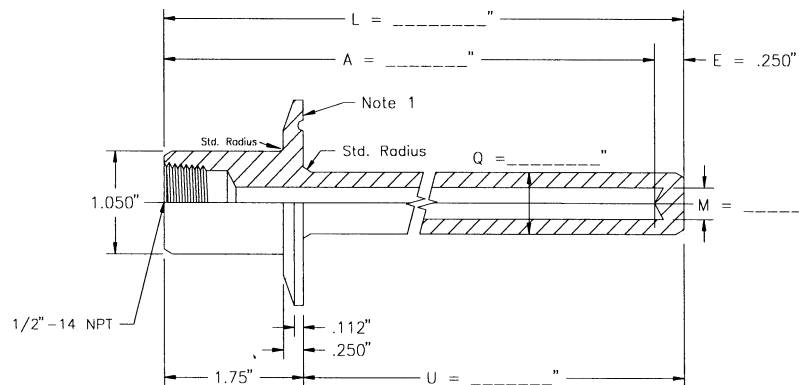
SERIES ECH



SERIES ECR



SERIES ECS



Note 1: Manufactured one piece construction with dimensions to mate to industry standard end caps.

Note 2: Specify: Series, Mating end cap size, surface finish, dimensions, and material grade.

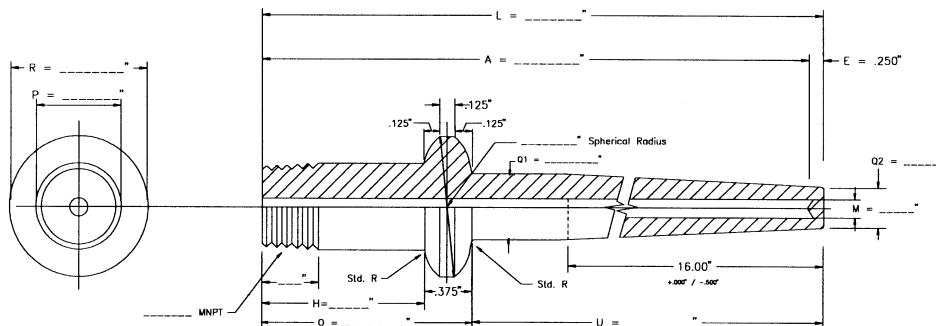


TEXAS THERMOWELL, INC.
"The Thermowell People"

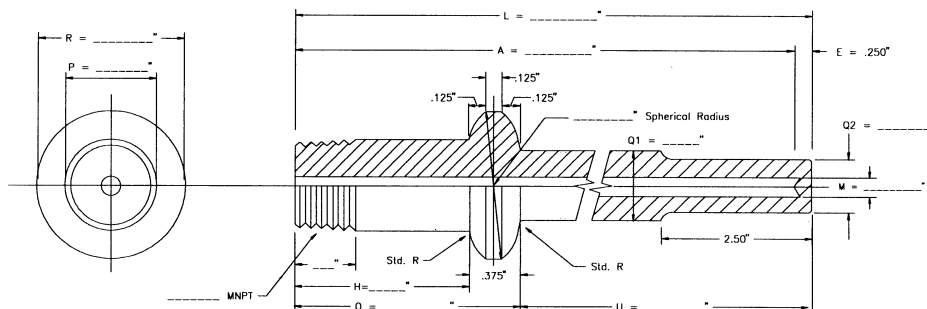
GROUND JOINT THERMOWELLS

SERIES: GJ

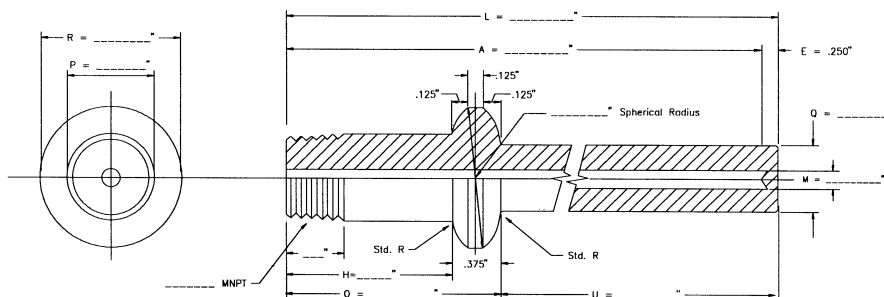
**SERIES
GJH**



**SERIES
GJR**



**SERIES
GJS**



Note 1: Specify size of spherical radius (1", 1-1/4", 1-1/2"), dimensions and material grade.

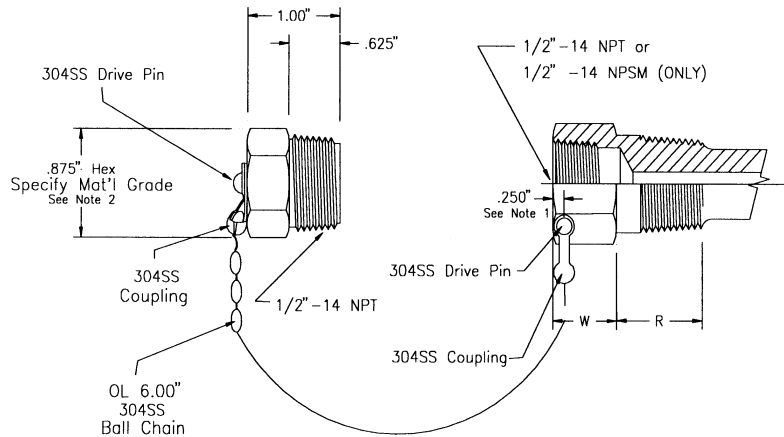
Note 2: Backing flange is available upon request. Specify flange size, rating and material grade.



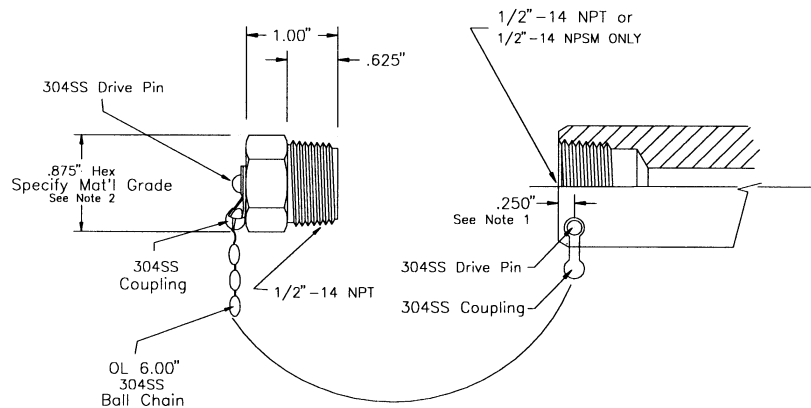
TEXAS THERMOWELL, INC.
"The Thermowell People"

PLUG & CHAIN ATTACHMENTS

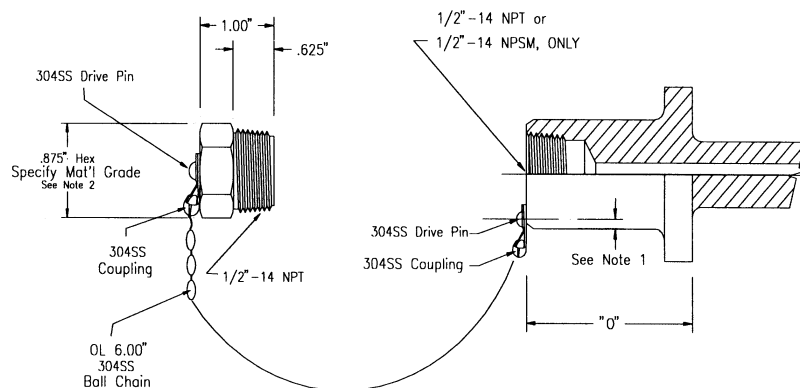
HEX BAR ATTACHMENT



ROUND BAR ATTACHMENT



VANSTONE SERIES ATTACHMENT



Note 1: Manufacturer reserves the right to alter the attachment location in order to accommodate the actual wall thickness.

Note 2: Hex head plug is available in Brass, 304SS, and 316SS materials.

Note 3: All dimensions are for reference and tolerance is nominal.